

**Specializing in the production of stainless steel yacht
marine accessories Manufacturing plant**

2021



**YUHUAN FUYOU MACHINERY CO.,LTD.
YUHUAN RIGGING CO.,LTD.**



地址: 浙江省玉环市海洋经济开发区永清路
ADD: Yongqing Road, Marine Economic Development zone,
Yuhuan City, Zhejiang Province, 317602 China.
电话/TEL: 0086-576-87509169 87509268
传真/FAX: 0086-576-87509366
手机/MOBILE: 0086-15267278858
QQ:2820039307
Http://www.chnfuyou.com
E-mail: lfp@chnfuyou.com sale@chnfuyou.com



www.chnfuyou.com





- RIGGING PRODUCTS
- EXCELLENT QUALITY
- SPECIAL MANUFACTURING
- SERVE WORLDS



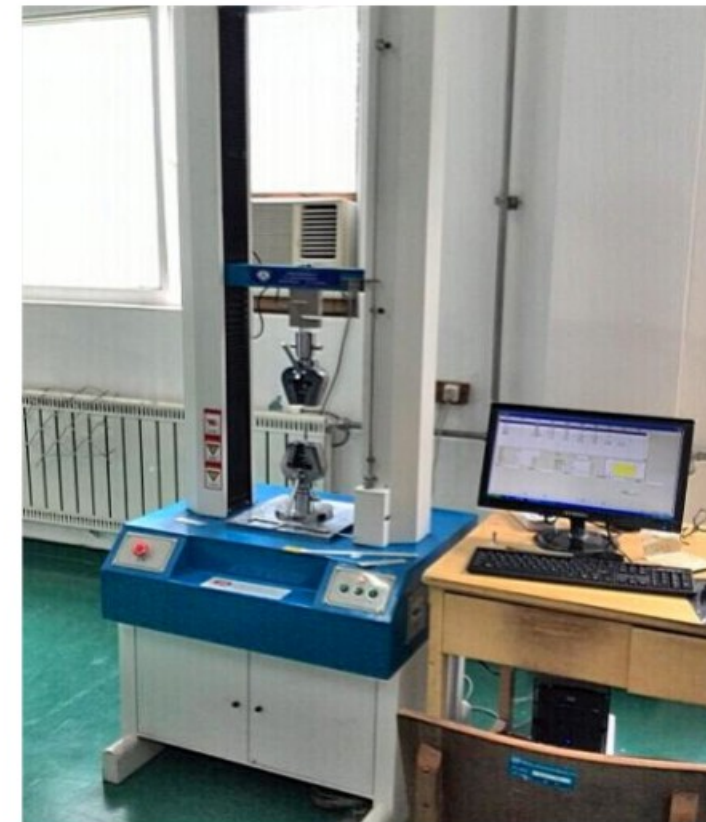
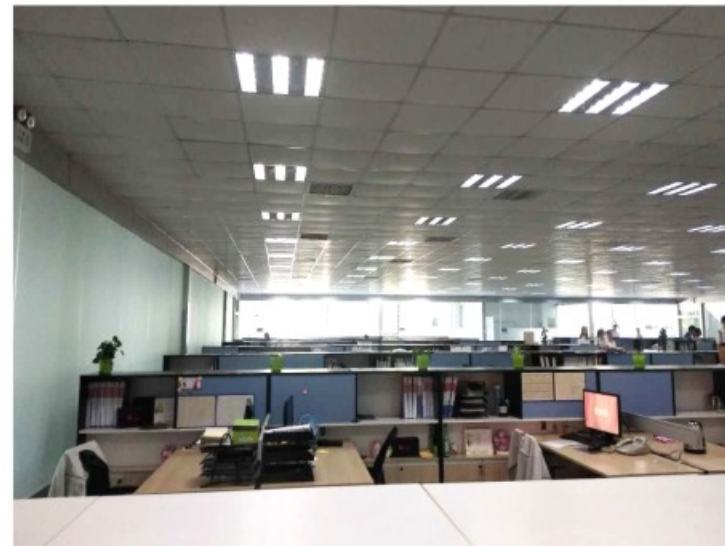
INTRODUCTION

YUHUAN RIGGING CO.,LTD. is located in the Kan Men Technological Industrial Zone. It was established in 1991, covering an area of 26000 sqm. The company specializes in manufacturing high-quality stainless steel welding tube and electronic products, which are widely used in yacht fittings. There are 900 species.

The company is equipped with 560 advanced processing machines and pressing assembly lines and also advanced technology for surface handling. Full-time technicians specialize in developing, experimenting and testing products and managing mass production. As well, so that the products are always kept updated to meet the needs of the markets.

The company strictly executes the ISO9001: 2000 International quality system and always seek greater cooperation and further development with customers, both old and new, based on the fine quality and fair price and also high credit.

COMPANY ENVIRONMENT



Pull Test Machine



Salt Spraying Tester



Handheld Spectrum Analyzer



R&D and Testing Center



R&D and Testing Center



CNC Automatic Hydraulic Bending Machine



Dual Cutting Machine



Pipe Bending Workshop



Wire Cutting Machine



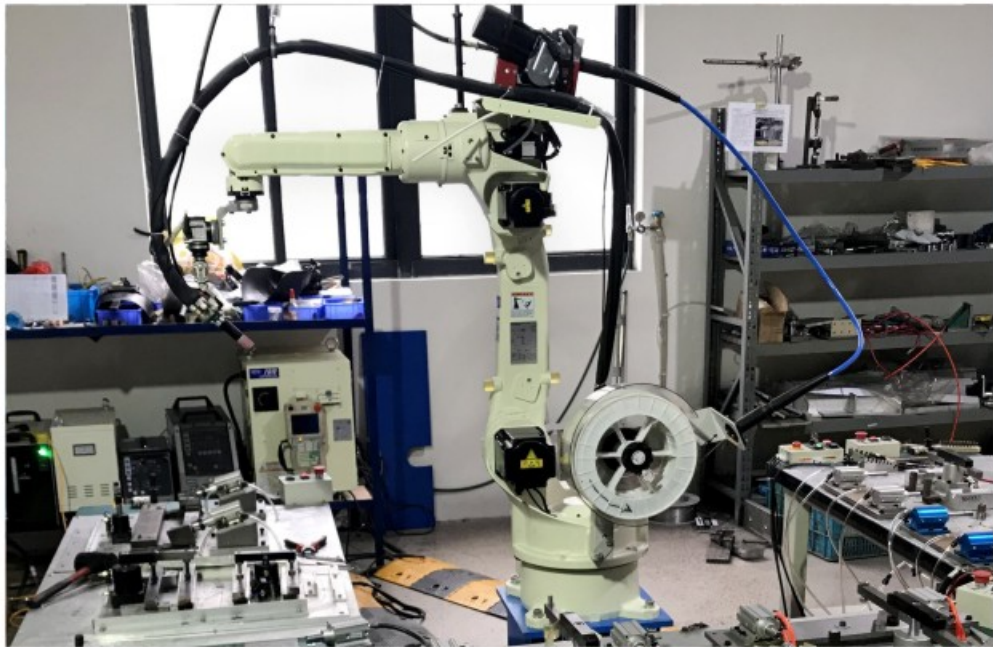
Dual Bending Machine



Welding Workshop



Plastic Injection Machine



Auto Welder



Automatic Welding Machine



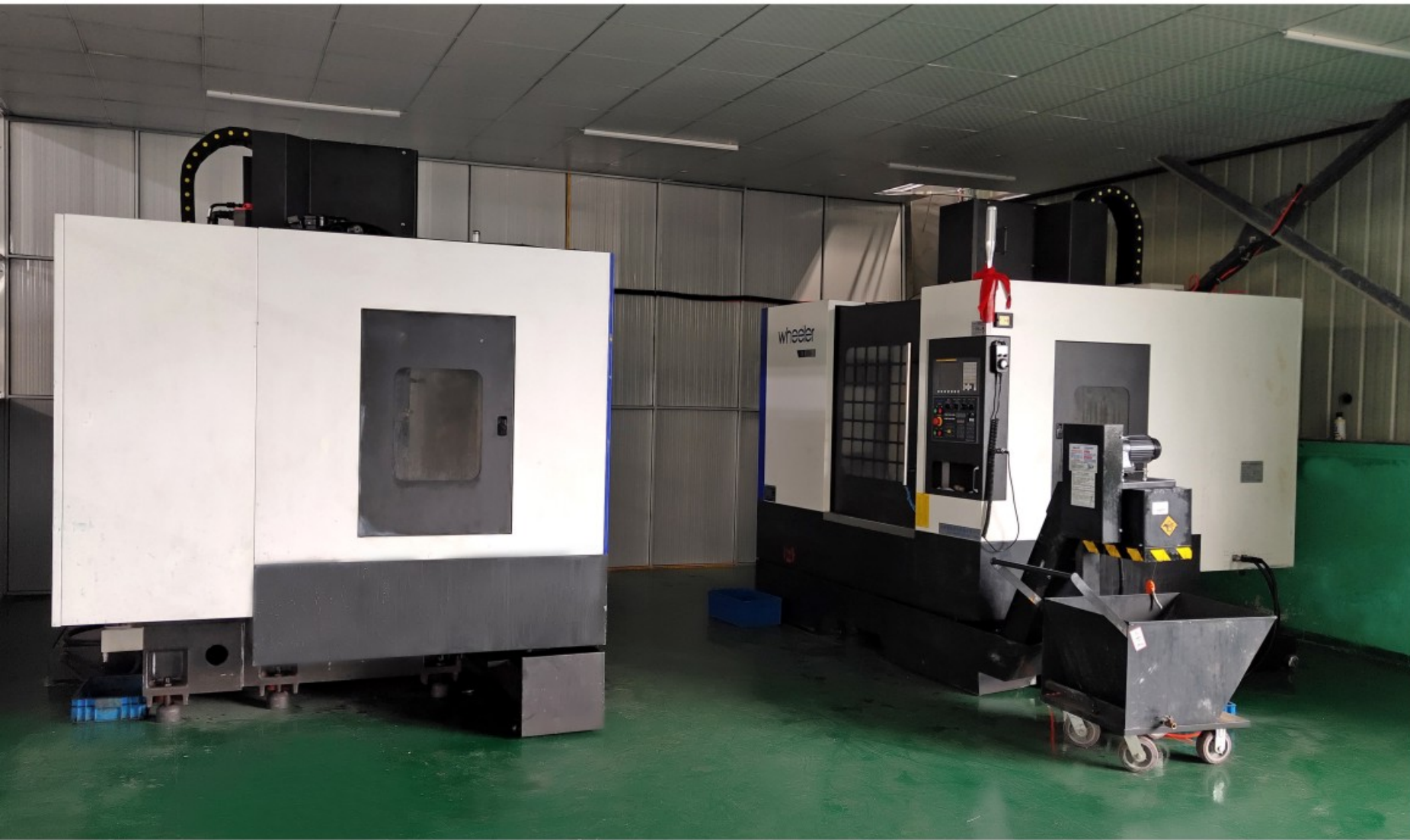
Automatic Lapped Machine



Laser Marking Machine



Plate Shearing Machine



Vertical Machining Centers



Stamping Workshop



Assembling Line



CNC Machine



Laser Cutting Machine



Polishing Workshop



Pipe Making Workshop



Pipe Making Workshop



Pipe Placing Area



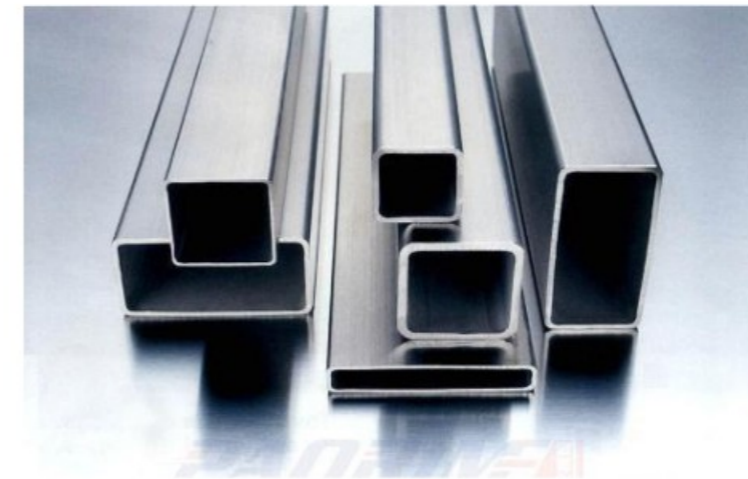
Pipe Making Machine

AVAILABLE SIZES OF SEAMED STAINLESS STEEL TUBES

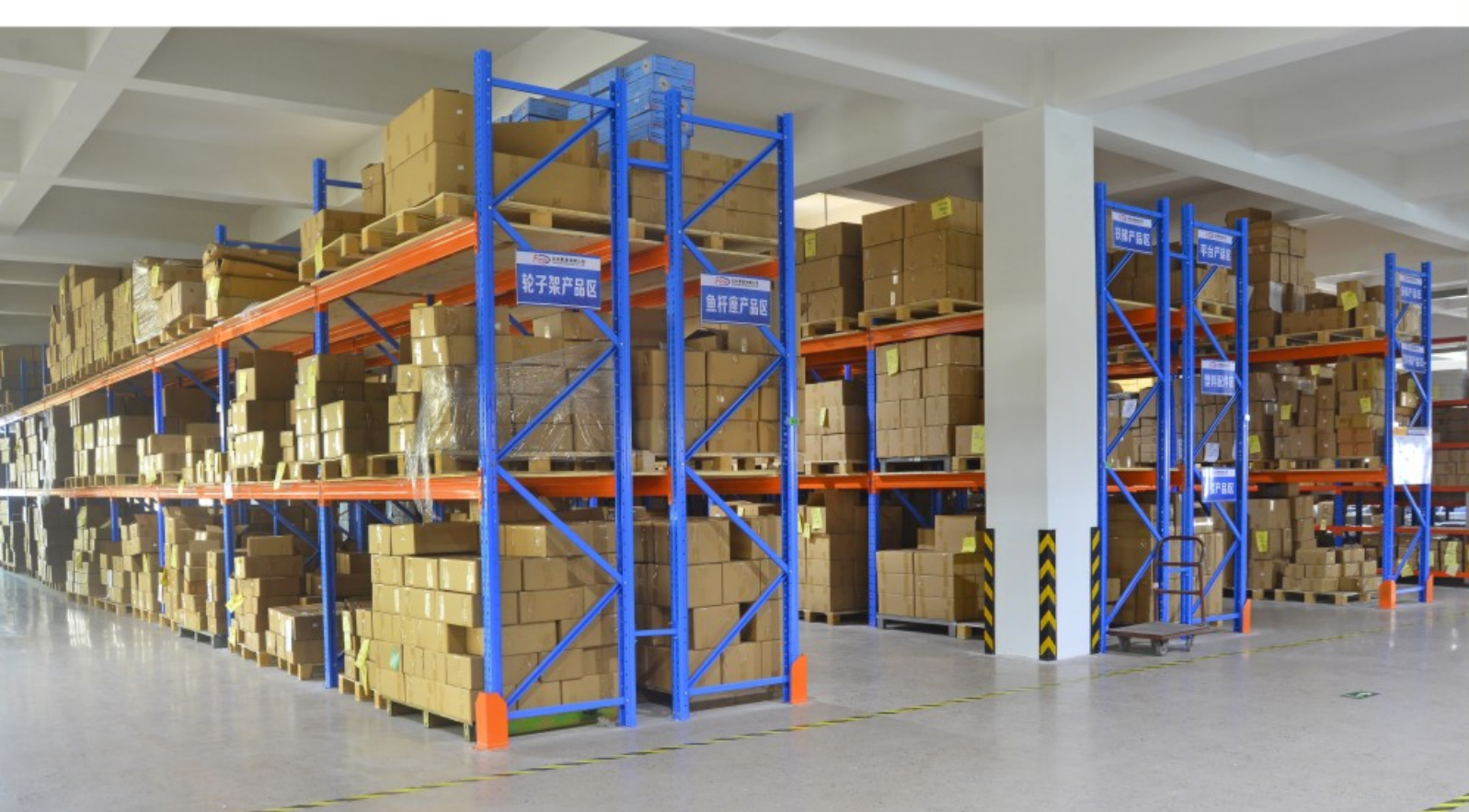
Stainless Steel AISI316



TYPE	Outer diameter x wall thickness	L/M
001910	φ 19x1	6M
001912	φ 19x1.2	6M
002012	φ 20x1.2	6M
002015	φ 20x1.5	6M
002210	φ 22x1	6M
002212	φ 22x1.2	6M
002215	φ 22x1.5	6M
002510	φ 25x1	6M
002512	φ 25x1.2	6M
002515	φ 25x1.5	6M
003010	φ 30x1	6M
003012	φ 30x1.2	6M
003015	φ 30x1.5	6M
003210	φ 32x1	6M
003212	φ 32x1.2	6M
003215	φ 32x1.5	6M
003810	φ 38x1	6M
003812	φ 38x1.2	6M
003815	φ 38x1.5	6M
004015	φ 40x1.5	6M



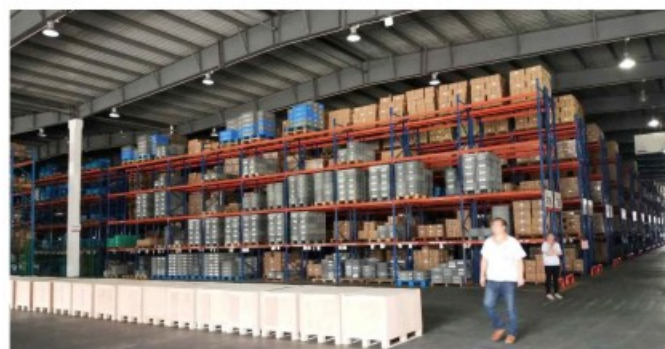
TYPE	Outer diameter x wall thickness	L/M
006017	10x20x1.0	6M
006018	20x20x1.0	6M
006019	25x25x1.0	6M
006020	30x30x1.2	6M
006021	35x35x1.2	6M
006022	20x40x1.2	6M
006023	40x40x1.2	6M



Warehouse A



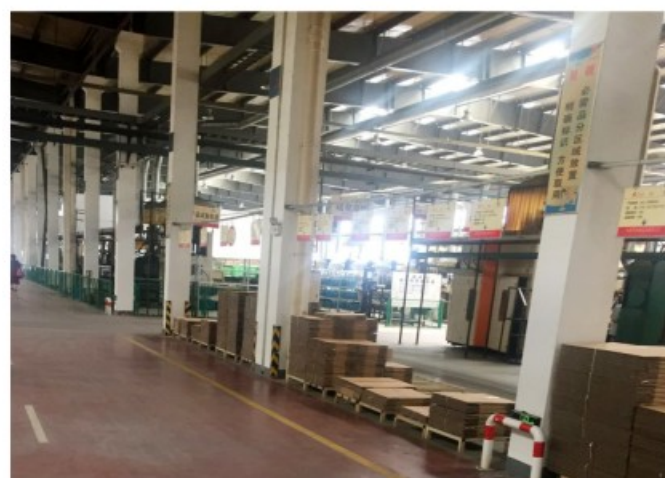
Moulds Placing Area



Warehouse B



Container Loading



Warehouse C



ROLL BAR FOR INFLATABLES
Made in stainless steel AISI 316 highly polished

Part No	Diameter	Length	Height
63270	30mm	1060~1560mm	1200mm
63272	40mm	1560~2060mm	1200mm
63273	50mm	1560~2060mm	1200mm
63280	40mm	1560~2060mm	1600mm



ROLL BAR FOR INFLATABLES
Made in stainless steel AISI 316 highly polished

Part No	Diameter	Length	Height
63274	30mm	1150~1650mm	1200mm
63276	40mm	1650~2150mm	1200mm
63278	50mm	1650~2150mm	1200mm



ROCKET LAUNCHER

Part No	Diameter	Length	Height
63290	32mm	2400x1640mm	1640mm



TOP ROLL BAR

Part No	Diameter	Length	Height
63291	25mm	1000mm	330mm
63292	25mm	1250mm	330mm

FOLDABLE CANOPY Provides absolute protection from the sun on small inflatables and crafts.
Resistant, made of polyester 600 D coated by PU,UV resistant and weight 200gr/m². Its frames are made of anodized aluminium ø 22mm and they are connected disposing you from the duty of putting them together.
It carries a 3 year fabric guarantee.

Blue
B
White
W

AWNING 2 ARMS ALUMINUM 22mm

Part No	Diameter	LengthxWidth	Height
2131811	22mm	130x180CM	110CM
2151811	22mm	150x180CM	110CM
2181811	22mm	175x180CM	110CM
2201811	22mm	200x180CM	110CM
2231811	22mm	225x180CM	110CM
2131814	22mm	130x180CM	140CM
2151814	22mm	150x180CM	140CM
2181814	22mm	175x180CM	140CM
2201814	22mm	200x180CM	140CM
2231814	22mm	225x180CM	140CM

Blue
B
White
W

AWNING 3 ARMS ALUMINUM 22mm

Part No	Diameter	LengthxWidth	Height
3131811	22mm	130x180CM	110CM
3151811	22mm	150x180CM	110CM
3171811	22mm	175x180CM	110CM
3191811	22mm	185x180CM	110CM
3201811	22mm	200x180CM	110CM
3231811	22mm	225x180CM	110CM
3131814	22mm	130x180CM	140CM
3151814	22mm	150x180CM	140CM
3171814	22mm	175x180CM	140CM
3191814	22mm	185x180CM	140CM
3201814	22mm	200x180CM	140CM
3231814	22mm	225x180CM	140CM

Blue
B
White
W

AWNING 4 ARMS ALUMINUM 22mm

Part No	Diameter	LengthxWidth	Height
4182514	22mm	175x250CM	140CM
4192514	22mm	190x250CM	140CM
4212514	22mm	205x250CM	140CM
4222514	22mm	220x250CM	140CM
4242514	22mm	235x250CM	140CM

CAPFOR PIPEEND made of nylon	PLUG Ais316	SOCKET made of nylon	HBUSHING made of nylon	CAP+SLIDE made of nylon					
Part No	D	Part No	D	Part No	D	Part No	D	Part No	D
71307	22mm	71308	22mm	71309	22mm	71310	22mm	71311	22mm

FOLDABLE CANOPY Provides absolute protection from the sun on small inflatables and crafts.
Resistant, made of polyester 600 D coated by PU,UV resistant and weight 200gr/m². Its frames are made of AISI 316 ø 25mm and they are connected disposing you from the duty of putting them together.
It carries a 3 year fabric guarantee.

Blue
B
White
W

3BIMINI S.S.316L stainless steel 25mm

Part No	Diameter	LengthxWidth	Height
S3172014B	25mm	170x180CM	140CM
S3192014B	25mm	185x180CM	140CM
S3202014B	25mm	200x180CM	140CM
S3222014B	25mm	215x180CM	140CM
S3232014B	25mm	230x180CM	140CM
S3252014B	25mm	240x180CM	140CM
S3262014B	25mm	260x180CM	140CM

Blue
B
White
W

4BIMINI S.S.316L stainless steel 25mm

Part No	Diameter	LengthxWidth	Height
S4182514	25mm	180x250CM	140CM
S4202514	25mm	200x250CM	140CM
S4222514	25mm	220x250CM	140CM
S4242514	25mm	240x250CM	140CM
S4262514	25mm	260x250CM	140CM

Blue
B
White
W

BIMINI TOP S.S.304L stainless steel 25mm

Part No	Diameter	LengthxWidth	Height
3549601	10"	96"x54"-60"	54"
3549602	10"	96"x61"-67"	54"
3549603	10"	96"x68"-74"	54"
3549604	10"	96"x75"-81"	54"
3549605	10"	96"x82"-88"	54"
3549606	10"	96"x89"-96"	54"
3549607	10"	96"x97"-102"	54"

ROCKET LAUNCHER

Part No	Diameter	LengthxWidth	Height
63283	40mm	205x145CM	120CM
63284	40mm	235x155CM	120CM
63285	40mm	235x170CM	120CM
63286	40mm	235x190CM	120CM



LADDER

www.chnfuyou.com

TELESCOPIC LADDER

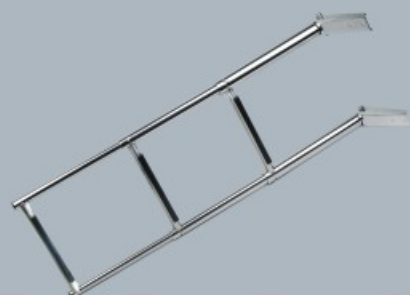
Stainless steel AISI 316 highly polished, with anti-sliding plastic material on steps.



Part No	Steps	Width	Length	Diameter
13002	2	254mm	598mm	19/25mm
13006	2	178mm	598mm	19/25mm

TELESCOPIC LADDER

Stainless steel AISI 316 highly polished, with anti-sliding plastic material on steps.



Part No	Steps	Width	Length	Diameter
13008	3	178mm	875mm	19/25/32mm
13003	3	254mm	875mm	19/25/32mm
130310	3	310mm	875mm	19/25/32mm

TELESCOPIC LADDER

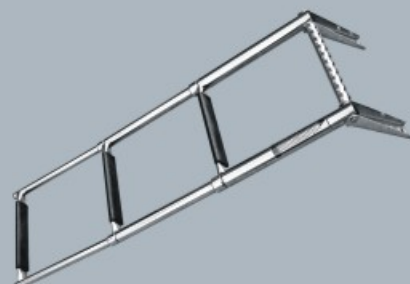
Stainless steel AISI 316 highly polished, with anti-sliding plastic material on steps.



Part No	Steps	Width	Length	Diameter
13009	4	178mm	1150mm	19/25/32/38mm
13004	4	254mm	1150mm	19/25/32/38mm

TELESCOPIC LADDER

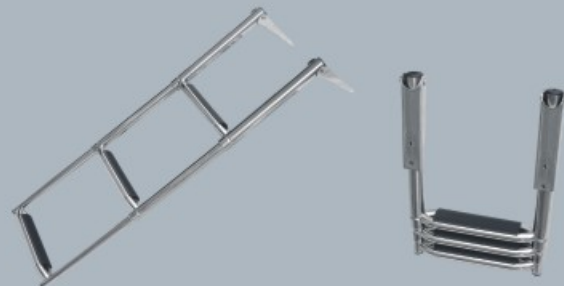
Stainless steel AISI 316 highly polished, with anti-sliding plastic material on steps.



Part No	Steps	Width	Length	Diameter
12002	2	254mm	598mm	19/25mm
12003	3	254mm	875mm	19/25/32mm
12004	4	254mm	1150mm	19/25/32/38mm

TELESCOPIC LADDER

Stainless steel AISI 316 highly polished, with anti-sliding plastic material on steps.



Part No	Height	Width	Length	Diameter
12082	2	254mm	598mm	19/25mm
12083	3	254mm	875mm	19/25/32mm
12084	4	254mm	1145mm	19/25/32/38mm

TELESCOPIC LADDER

Stainless steel AISI 316 highly polished, with anti-sliding plastic material on steps.



Part No	Steps	Width	Length	Diameter
13005	5	254mm	1410mm	19/25/32/38/45
13007	6	254mm	1710mm	19/25/32/38/45/52

TELESCOPIC LADDER

Stainless steel AISI 316 highly polished, with anti-sliding plastic material on steps.



Part No	Steps	Width	Length	Diameter
15216	4	254mm	1145mm	19/25/32/38mm

BLACK COATED TELESCOPIC LADDER

Stainless steel AISI 316 highly polished, with anti-sliding plastic material on steps.



Part No	Steps	Width	Length	Diameter
13008BC	3	178mm	875mm	19/25/32mm
13003BC	3	254mm	875mm	19/25/32mm
130310BC	3	310mm	875mm	19/25/32mm

www.chnfuyou.com

LADDER



TELESCOPIC LADDER

Stainless steel AISI 316 highly polished, with anti-sliding plastic material on steps.



Part No	Steps	Width	Length	Diameter
12091	3	254mm	875mm	19/25/32mm
12092	4	254mm	1145mm	19/25/32/38mm

TELESCOPIC LADDER

Stainless steel AISI 316 highly polished, with anti-sliding plastic material on steps.



Part No	Steps	Width	Length	Diameter
12093	3	254mm	875mm	19/25/32mm
12094	4	254mm	1145mm	19/25/32/38mm

TELESCOPIC LADDER

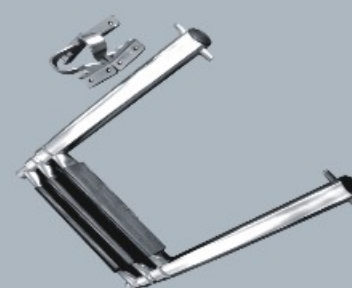
Stainless steel AISI 316 highly polished, with anti-sliding plastic material on steps.



Part No	Steps	Width	Length	Diameter
12095	3	254mm	875mm	19/25/32mm
12096	4	254mm	1145mm	19/25/32/38mm

TELESCOPIC LADDER

Stainless steel AISI 316 highly polished, with anti-sliding plastic material on steps.



Part No	Steps	Width	Length	Diameter
13010	3	254mm	875mm	19/25/32mm

FOLDING TELESCOPIC LADDER WITH HANDRAIL

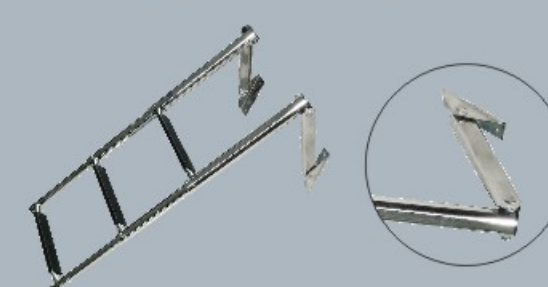
Stainless steel AISI 316 highly polished, with anti-sliding plastic material on steps.



Part No	Steps	Width	Length	Diameter
12073	3	370mm	1020mm	25/32mm
12074	4	370mm	1300mm	19/25/32mm
12075	5	370mm	1580mm	19/25/32/38mm

TELESCOPIC LADDER

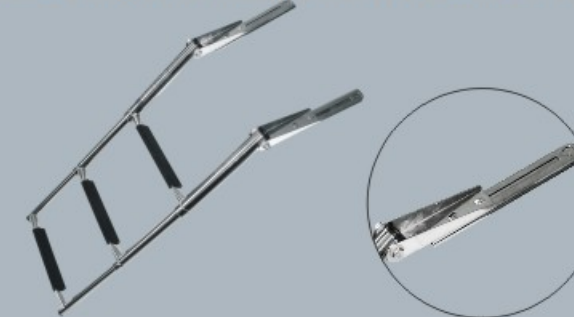
Stainless steel AISI 316 highly polished, with anti-sliding plastic material on steps.



Part No	Steps	Width	Length	Diameter
11478	3	254mm	875mm	19/25/32mm
11479	4	254mm	1145mm	19/25/32/38mm

TELESCOPIC LADDER

Stainless steel AISI 316 highly polished, with anti-sliding plastic material on steps.



Part No	Steps	Width	Length	Diameter
12013	3	254mm	875mm	19/25/32mm
12014	4	254mm	1145mm	19/25/32/38mm

FOLDING LADDER

Stainless steel AISI 316 highly polished, with anti-sliding plastic material on steps.



Part No	Steps	Width	Length	Diameter
12097	3	254mm	875mm	19/25/32mm
12098	4	254mm	1145mm	19/25/32/38mm



LADDER

www.chnfuyou.com

PANTOON LADDER W/LED LIGHT

Stainless steel AISI 304 highly polished, with anti-sliding plastic material on steps.



Part No	Steps	Width	Length	Diameter
12087B	3	380mm	1320mm	19/25/32mm
12088B	4	380mm	1600mm	19/25/32/38mm

FOLDING LADDER

Stainless steel AISI 316 highly polished, with anti-sliding plastic material on steps.



Part No	Steps	Width	Length	Diameter
12087	3	380mm	1320mm	19/25/32mm
12088	4	380mm	1600mm	19/25/32/38mm

PANTOON LADDER

Stainless steel AISI 304 highly polished, with anti-sliding plastic material on steps.



Part No	Steps	Width	Length	Diameter
12288B	4	380mm	1600mm	19/25/32/38mm

LOW PROFILE PANTOON LADDER, SINGLE TUBE TREAD

Stainless steel AISI 304 highly polished, with anti-sliding plastic material on steps.



Part No	Steps	Width	Length	Diameter
12070	4	380mm	1600mm	19/25/32/38mm

24.3" WIDE SS LADDER, DOUBLE TUBES TREAD



Part No	Steps	Width	Length	Diameter
12288	4	380mm	1600mm	19/25/32/38mm

20" WIDE PANTOON LADDER, DOUBLE TUBES TREAD



Part No	Steps	Width	Length	Diameter
12177	4	380mm	1600mm	19/25/32/38mm

ASSEMBLED PANTOON LADDER

Stainless steel AISI 304 highly polished, with anti-sliding plastic material on steps.



Part No	Steps	Width	Length	Diameter
12097	4	380mm	1600mm	19/25/32/38mm

PANTOON LADDER

Stainless steel AISI 304 highly polished, with anti-sliding plastic material on steps.



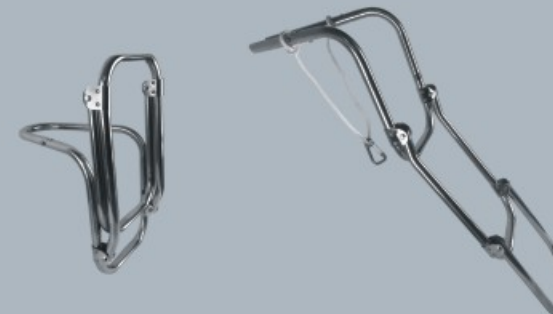
Part No	Steps	Width	Length	Diameter
12098	4	380mm	1600mm	19/25/32/38mm

www.chnfuyou.com

LADDER



ALUMINUM LADDER



Part No	Steps	Width	Length	Diameter
1609	3	274mm	800mm	25mm

ALUMINUM LADDER



Part No	Steps	Width	Length	Diameter
12376	5	300mm	1500mm	25*50mm

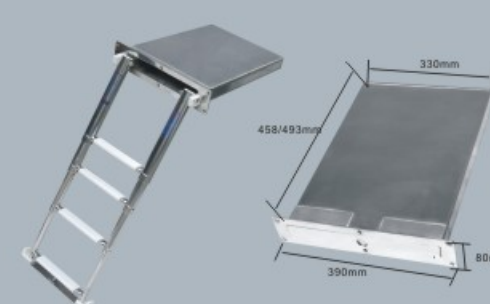
TELESCOPIC LADDER W/PLASTIC STEP



Part No	Steps	Width	Length	Diameter
12024	4	340mm	1180mm	19/25/32mm

BOX LADDER

Made in stainless steel AISI 316 highly polished.



Part No	Steps	Width	Length	Diameter
1620	3	254mm	875mm	19/25/32mm
1622	4	254mm	1150mm	19/25/32/38mm

EASY BOARDING LADDER



Part No	Steps	Width	Length	Diameter
12388	4	428mm	1766mm	25/32mm

WIDE ALUMINUM LADDER



Part No	Steps	Width	Length	Diameter
12377	5	467mm	1500mm	25*50mm

3+1 STEPS LADDER



Part No	Steps	Width	Length	Diameter
15218	3+1	254mm	875mm	19/25/32mm

DUAL STEP BOX LADDER

Made in stainless steel AISI 316 highly polished.



Part No	Steps	Width	Length	Diameter
1620D	3	254mm	875mm	19/25/32mm
1622D	4	254mm	1150mm	19/25/32/38mm



LADDER

www.chnfuyou.com

LADDER WITH PLATFORM

Stainless steel AISI 316 highly polished, with anti-sliding plastic material on steps.



Part No	Steps	Width	Length	Diameter
11456A	2	254mm	598mm	19/25mm
11457A	3	254mm	875mm	19/25/32mm
11458A	4	254mm	1150mm	19/25/32/38mm
11455A	2	178mm	598mm	19/25mm
11459A	3	178mm	875mm	19/25/32mm
11460A	4	178mm	1150mm	19/25/32/38mm

LADDER WITH PLATFORM

Stainless steel AISI 316 highly polished, with anti-sliding plastic material on steps.



Part No	Steps	Width	Length	Diameter
12079	2	292mm	598mm	19/25mm
12080	3	300mm	875mm	19/25/32mm
12081	4	306mm	1145mm	19/25/32/38mm

LADDER WITH PLATFORM

Stainless steel AISI 316 highly polished, with anti-sliding plastic material on steps.



Part No	Steps	Width	Length	Diameter
11461	3	254mm	875mm	19/25/32mm
11462	4	254mm	1150mm	19/25/32/38mm

LADDER WITH PLATFORM

Stainless steel AISI 316 highly polished, with anti-sliding plastic material on steps.



Part No	Steps	Width	Length	Diameter
12076	2	254mm	598mm	19/25mm
12077	3	254mm	875mm	19/25/32mm
12078	4	254mm	1145mm	19/25/32/38mm

LADDER WITH PLATFORM

Stainless steel AISI 304 highly polished, with anti-sliding plastic material on steps.



Part No	Steps	Width	Length	Diameter
1468	4	254mm	1150mm	19/25/32/38mm
1469	4	380mm	1150mm	19/25/32/38mm

LADDER WITH PLATFORM

Stainless steel AISI 316 highly polished, with anti-sliding plastic material on steps.



Part No	Steps	Width	Length	Diameter
11456	2	254mm	598mm	19/25mm
11457	3	254mm	875mm	19/25/32mm
11458	4	254mm	1150mm	19/25/32/38mm
11455	2	178mm	598mm	19/25mm
11459	3	178mm	875mm	19/25/32mm
11460	4	178mm	1150mm	19/25/32/38mm

LADDER WITH PLATFORM

Stainless steel AISI 316 highly polished, with anti-sliding plastic material on steps.



Part No	Steps	Width	Length	Diameter
11453	3	375mm	875mm	25mm
11454	4	375mm	1145mm	25mm

www.chnfuyou.com

LADDER



UNDERPLATFORM LADDER 4 STEPS, ELASTIC VERSION

Stainless steel AISI 316 highly polished, with anti-sliding plastic material on steps.



Part No	Steps	Width	Length	Diameter
11659	4	254mm	1150mm	19/25/32/38mm
11659A	4	254mm	1150mm	19/25/32/38mm

UNDERPLATFORM LADDER 4 STEPS, ELASTIC VERSION

Stainless steel AISI 316 highly polished, with anti-sliding plastic material on steps.



Part No	Steps	Width	Length	Diameter
11658	4	254mm	1150mm	19/25/32/38mm

LADDER WITH PLATFORM

Stainless steel AISI 316 highly polished, with wood material on steps.



Part No	Steps	Width	Length	Diameter
11471	3	254mm	875mm	19/25/32mm

TELESCOPIC LADDER

Stainless steel AISI 304 highly polished, with anti-sliding plastic material on steps.



Part No	Steps	Width	Length	Diameter
11480	3	310mm	850mm	19/25/32mm

FOLDING LADDER WITH HANDRAIL

Made in stainless steel AISI 316 highly polished, provided with adjustable spacers, with no-slip safety tread surface.



Part No	Steps	Width	Length	Diameter
11050	3	228mm	665mm	22mm
11051	4	228mm	940mm	22mm
11052	5	228mm	1155mm	22mm

FOLDING LADDER

Stainless steel AISI 316 highly polished, with anti-sliding plastic material on steps.



Part No	Steps	Width	Length	Diameter
12015	5	260mm	1185mm	25mm
12016	5	230mm	1185mm	25mm

FOLDING LADDER

Stainless steel AISI 316 highly polished, with anti-sliding plastic material on steps.



Part No	Steps	Width	Length	Diameter
13030	3	228mm	600mm	22mm
13032	4	228mm	875mm	22mm
13034	5	228mm	1080mm	22mm
11030	3	178mm	600mm	22mm
11031	4	178mm	875mm	22mm
11032	5	178mm	1080mm	22mm

BLACK COATED FOLDING LADDER

Stainless steel AISI 316 highly polished, with anti-sliding plastic material on steps.



Part No	Steps	Width	Length	Diameter
13030BC	3	228mm	600mm	22mm
13032BC	4	228mm	875mm	22mm
13034BC	5	228mm	1080mm	22mm
11030BC	3	178mm	600mm	22mm
11031BC	4	178mm	875mm	22mm
11032BC	5	178mm	1080mm	22mm



LADDER

www.chnfuyou.com

LADDER

Stainless steel AISI 316 highly polished, with anti-sliding plastic material on steps.



Part No	Steps	Width	Length	Diameter
12007	2	200mm	400mm	25mm

LADDER

Stainless steel AISI 316 highly polished, with anti-sliding plastic material on steps.



Part No	Steps	Width	Length	Diameter
12009	2	185mm	400mm	25mm

STAINLESS STEEL TRANSOM PLATFORM

Stainless steel AISI 316 highly polished, with anti-sliding plastic material on steps.



Part No	Steps	Width	Length	Diameter
12047	1	330mm	370mm	25mm
12043	2	330mm	670mm	25mm

COMPACT STAINLESS STEEL TRANSOM LADDER

Stainless steel AISI 316 highly polished, with anti-sliding plastic material on steps.



Part No	Steps	Width	Length	Diameter
12048	2	370mm	390mm	25mm

FOLDING LADDER

Stainless steel AISI 316 highly polished, with anti-sliding plastic material on steps.



Part No	Steps	Width	Length	Diameter
10146	2+1	254mm	811mm	25mm
10147	2+2	254mm	1064mm	25mm
10148	2+3	254mm	1325mm	25mm

LADDER

Stainless steel AISI 316 highly polished, with anti-sliding plastic material on steps.



Part No	Steps	Width	Length	Diameter
11064	3	173mm	700mm	25mm

FOLDING LADDER

Stainless steel AISI 316 highly polished, with anti-sliding plastic material on steps.



Part No	Steps	Width	Length	Diameter
11001	3+1	210mm	1160mm	19/25mm

UNDER PLATFORM LADDER

Stainless steel AISI 316 highly polished, with anti-sliding plastic material on steps.



Part No	Steps	Width	Length	Diameter
13021	3	254mm	875mm	19/25/32mm

www.chnfuyou.com

LADDER



FOLDING TELESCOPIC LADDER WITH HANDRAIL

Made in stainless steel AISI 316 highly polished, flat steps, covered with anti-slip plastic material, with hand rail.



Part No	Steps	Width	Length	Diameter
12008	4	254mm	1100mm	19/25/32mm

FOLDING TELESCOPIC LADDER WITH HANDRAIL

Stainless steel AISI 316 highly polished, with anti-sliding plastic material on steps.



Part No	Steps	Width	Length	Diameter
1092	4	280mm	1080mm	19/25/32/38mm
1093	6	280mm	1320mm	19/25/32/38mm
1094	6	360mm	1955mm	19/25/32/38mm

PONTOON SWIN LADDER

Stainless steel AISI 316 highly polished, with anti-sliding plastic material on steps.



Part No	Steps	Width	Length	Diameter
12055	3	375mm	910mm	25mm
12056	4	375mm	1270mm	25mm

LONG BASE LADDERS

Stainless steel AISI 316 highly polished, with anti-sliding plastic material on steps.



Part No	Steps	Width	Length	Diameter
12039	3	400mm	760mm	25mm
12040	4	400mm	1280mm	25mm

SUPPORT LADDER

Stainless steel AISI 316 highly polished, with anti-sliding plastic material on steps.



Part No	Steps	Width	Length	Diameter
11490	3	245mm	940-1030mm	25mm
11491	4	245mm	1205-1295mm	25mm
11492	5	245mm	1475-1560mm	25mm

SUPPORT LADDER

Made in stainless steel AISI 316 highly polished, provided with adjustable spacers, with no-slip safety tread surface.



Part No	Steps	Width	Length	Diameter
12011	3	225mm	680mm	25mm
12012	4	225mm	915mm	25mm

FOLDING LADDER

Stainless steel AISI 316 highly polished, with anti-sliding plastic material on steps.



Part No	Steps	Width	Length	Diameter
11610	2+1	245mm	720mm	25mm
11612	2+2	245mm	960mm	25mm
11614	3+1	245mm	990mm	25mm
11616	3+2	245mm	1200mm	25mm

LADDER

Stainless steel AISI 316 highly polished, with anti-sliding plastic material on steps.



Part No	Steps	Width	Length	Diameter
11481	3	254mm	260mm	25mm
11482	4	254mm	1280mm	25mm



LADDER

www.chnfuyou.com

TELESCOPIC LADDER

Stainless steel AISI 316 highly polished, with anti-sliding plastic material on steps.



Part No	Steps	Width	Length	Diameter
13003B	3	360mm	875mm	25mm
13004B	4	460mm	1150mm	25mm

FOLDING LADDER

Stainless steel AISI 316 highly polished, with anti-sliding plastic material on steps.



Part No	Steps	Width	Length	Diameter
11473	3	254mm	650mm	25mm
11474	4	254mm	890mm	25mm
11475	5	254mm	1150mm	25mm

TELESCOPIC LADDER

Stainless steel AISI 316 highly polished, with anti-sliding plastic material on steps.



Part No	Steps	Width	Length	Diameter
15219	3	254mm	875mm	19/25/32mm

GANGPLANK TELESCOPIC LADDER WITH HANDLES

Made in stainless steel AISI 316 highly polished.



Part No	Steps	Width	Length	Diameter
54603	3	254mm	990mm	19/25/32mm
54604	4	254mm	1040mm	19/25/32/38mm

PLATFORM LADDER

Stainless steel AISI 304 highly polished, with anti-sliding plastic material on steps.



Part No	Steps	Width	Length	Diameter
11464	4	485mm	950mm	19/25/32/38mm

TELESCOPIC LADDER W/FINGER GRIP

Stainless steel AISI 304 highly polished, with anti-sliding plastic material on steps.



Part No	Steps	Width	Length	Diameter
12023	3	318mm	885mm	19/25/32mm

FOLDING LADDER



Part No	Steps	Width	Length	Diameter
12085	3	254mm	940mm	25mm
12086	4	254mm	1150mm	25mm

LADDER

Stainless steel AISI 316 highly polished, with anti-sliding plastic material on steps.



Part No	Steps	Length	Width	Width
ET001	1	466mm	203mm	222mm
ET002	1	429mm	203mm	222mm
ET003	1	429mm	203mm	211mm

www.chnfuyou.com

LADDER



FOLDING LADDER

Made in stainless steel AISI 316 highly polished, with anti-sliding plastic material on steps.



Part No	Steps	Width	Length	Diameter
18340	3	200mm	946mm	22mm

GANGPLANK TELESCOPIC LADDER WITH HANDLES

Made in stainless steel AISI 316 highly polished.



Part No	Steps	Width	Length	Diameter
S1903240	3	225mm	950mm	25mm
S2922003	4	259mm	1090mm	25mm
S1922004	3	259mm	950mm	25mm

FOLDING LADDER

Made in stainless steel AISI 316 highly polished, with anti-sliding plastic material on steps.



Part No	Steps	Width	Length	Diameter
58203	3	240mm	685mm	22mm
58204	4	240mm	910mm	22mm
58205	5	240mm	1150mm	22mm

TELESCOPIC LADDER

Made in stainless steel AISI 316 highly polished, with anti-sliding plastic material on steps.



Part No	Steps	Width	Length	Diameter
12066	3	350mm	875mm	19/25/32mm
12067	4	350mm	1150mm	19/25/32/38mm

LADDER

Stainless steel AISI 316 highly polished, with anti-sliding plastic material on steps.



Part No	Steps	Width	Length	Diameter
15212	2	300mm	710mm	40mm
15213	2	330mm	710mm	40mm

LADDER

Stainless steel AISI 316 highly polished, with anti-sliding plastic material on steps.



Part No	Steps	Width	Length	Diameter
15214	3	254mm	875mm	19/25/32mm
15215	4	254mm	1145mm	19/25/32/38mm

LADDER

Stainless steel AISI 316 highly polished, with anti-sliding plastic material on steps.



Part No	Steps	Width	Length	Diameter
11466	3	365mm	920mm	45/38mm
11467	4	365mm	1220mm	45/38mm

DIVE LADDER

Stainless steel AISI 304 highly polished, with anti-sliding plastic material on steps.



Part No	Steps	Width	Length	Diameter
12068	3	180mm	800mm	19/25/32mm



LADDER

www.chnfuyou.com

REMOVABLE FOLDING PONTOON BOARDING LADDER

Stainless steel AISI 316 highly polished, with anti-sliding plastic material on steps.



Part No	Steps	Width	Length	Diameter
12030	2+2	400mm	1090mm	25mm
12031	2+1	400mm	840mm	25mm

FOLDING PONTOON TRANSOM BOARDING LADDER

Stainless steel AISI 316 highly polished, with anti-sliding plastic material on steps.



Part No	Steps	Width	Length	Diameter
12035	2+1	400mm	890mm	25mm
12036	2+2	400mm	1170mm	25mm

STAINLESS STEEL GUNWALE HOOK LADDER

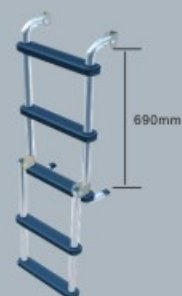
Made in aluminum highly polished, with anti-sliding plastic material on steps.



Part No	Steps	Width	Length	Diameter
12021	2	400mm	990mm	25mm
12022	3	400mm	1220mm	25mm

LONG BASE LADDERS

Made in aluminum.



Part No	Steps	Width	Length	Diameter
14020	2	660mm	400mm	25mm
14021	3	850mm	400mm	25mm
14022	4	1100mm	400mm	25mm

EMERGENCY LADDER

Stainless steel AISI 316 highly polished, with anti-sliding plastic material on steps.



Part No	Steps	Width	Length	Diameter
12050	3	400mm	940mm	25mm
12051	4	400mm	1150mm	25mm
12052	5	400mm	1350mm	25mm

LADDER

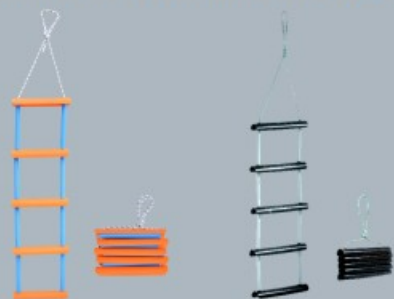
Made in aluminum highly polished, with anti-sliding plastic material on steps.



Part No	Steps	Width	Length	Diameter
1605	2	280mm	900mm	25mm
1607	3	280mm	1100mm	25mm

EMERGENCY LADDER

Stainless steel AISI 316 highly polished, with anti-sliding plastic material on steps.



Part No	Steps	Width	Length	Diameter
12050B	3	400mm	940mm	25mm
12051B	4	400mm	1150mm	25mm
12052B	5	400mm	1350mm	25mm

LADDER

Stainless steel AISI 316 highly polished, with anti-sliding plastic material on steps.



Part No	Steps	Width	Length	Diameter
12028	3	400mm	940mm	25mm
12029	4	400mm	1150mm	25mm

www.chnfuyou.com

LADDER&PLATFORM



ANODIZED ALUMINUM LADDER FOLDING MODEL

Made in aluminum highly polished, with anti-sliding plastic material on steps.



Part No	Steps	Width	Length	Diameter
12017	2	375mm	690mm	25mm
12018	3	375mm	910mm	25mm
12019	4	375mm	1210mm	25mm

TRANSOM PLATFORM WITH LADDER

Stainless steel AISI 316 highly polished, with anti-sliding plastic material on steps.



Part No	Steps	Width	Length	Diameter
12045	1	360mm	460mm	25mm

TRANSOM PLATFORM WITH TELESCOPING LADDER

Stainless steel AISI 316 highly polished, with anti-sliding plastic material on steps.



Part No	Steps	Width	Length	Diameter
12058	2	360mm	460mm	25mm
12059	3	360mm	460mm	25mm

WOOD PLATFORM

Made in stainless steel AISI 316 highly polished.



Part No	Width	Length	Diameter
11068	500mm	450mm	25mm
11065	380mm	450mm	25mm
11063	500mm	600mm	25mm

ANODIZED ALUMINIUM LADDER FOLDING MODEL

Made in aluminum highly polished, with anti-sliding plastic material on steps.



Part No	Steps	Width	Length	Diameter
12060	3	400mm	990mm	25mm
12061	4	400mm	1220mm	25mm
12062	5	400mm	1450mm	25mm

TRANSOM PLATFORM WITH TELESCOPING LADDER

Stainless steel AISI 316 highly polished, with anti-sliding plastic material on steps.



Part No	Steps	Width	Length	Diameter
12053	1	360mm	460mm	25mm

TRANSOM PLATFORM WITH TELESCOPING LADDER

Stainless steel AISI 316 highly polished, with anti-sliding plastic material on steps.



Part No	Steps	Width	Length	Diameter
12046	2	360mm	460mm	25mm
12049	3	360mm	460mm	25mm

WOOD PLATFORM

Made in stainless steel AISI 316 highly polished.



Part No	Width	Length	Diameter
11061	270mm	390mm	25mm
11704	210mm	390mm	25mm



LADDER&PLATFORM

www.chnfuyou.com

FOLDING LADDER

Stainless steel AISI 316 highly polished, with anti-sliding plastic material on steps.



Part No	Steps	Width	Length	Diameter
14001	2+1	270mm	760mm	25mm
14002	2+2	270mm	1020mm	25mm
14003	3+2	270mm	1250mm	25mm

FOLDING LADDER

Made in stainless steel AISI 316 highly polished, provided with wooden step.



Part No	Steps	Width	Length	Diameter
13035	3	178mm	600mm	22mm
13036	4	178mm	875mm	22mm
13037	5	178mm	1080mm	22mm

FOLDING LADDER

Made in stainless steel AISI 316 highly polished, provided with wooden steps.



Part No	Steps	Width	Length	Diameter
11038	2+1	165mm	560mm	25mm
11040	2+2	165mm	755mm	25mm

FOLDING LADDER

Made in stainless steel AISI 316 highly polished, provided with wooden steps.



Part No	Steps	Width	Length	Diameter
11041	2+1	254mm	825mm	25mm
11042	2+2	254mm	1070mm	25mm
11043	2+3	254mm	1310mm	25mm

WOOD PLATFORM

Stainless steel AISI 316 highly polished, with anti-sliding plastic material on steps.



Part No	Steps	Width	Length	Diameter
1085A	3	380mm	840mm	25mm
1086A	3	380mm	1000mm	25mm
1087A	3	600mm	1090mm	25mm
1088A	3	600mm	1310mm	25mm
1089A	3	600mm	1270mm	25mm

PLATFORM WITH FOLDING LADDER

Stainless steel AISI 316 highly polished, with anti-sliding plastic material on steps.



Part No	Steps	Width	Length	Diameter
19516	3	210mm	390mm	25mm
19517	2	270mm	390mm	25mm

PLATFORM WITH FOLDING LADDER

Stainless steel AISI 316 highly polished, with anti-sliding plastic material on steps.



Part No	Steps	Width	Length	Diameter
19514	3	450mm	390mm	25mm

PLATFORM WITH TELESCOPIC LADDER

Stainless steel AISI 316 highly polished, with anti-sliding plastic material on steps.



Part No	Steps	Width	Length	Diameter
19518	3	405mm	425mm	25mm

www.chnfuyou.com

PLATFORM



WOOD PLATFORM

Made in stainless steel AISI 316 highly polished.



Part No	Width	Length	Diameter
1085	380mm	840mm	25mm
1086	380mm	1000mm	25mm
1087	600mm	1090mm	25mm
1088	600mm	1310mm	25mm
1089	600mm	1270mm	25mm

WOOD PLATFORM

Made in stainless steel AISI 316 highly polished.



Part No	Width	Length	Diameter
1097	450mm	800mm	30mm

WOOD PLATFORM

Made in stainless steel AISI 316 highly polished.



Part No	Steps	Width	Length	Diameter
19513	3	450mm	390mm	25mm

WOOD PLATFORM

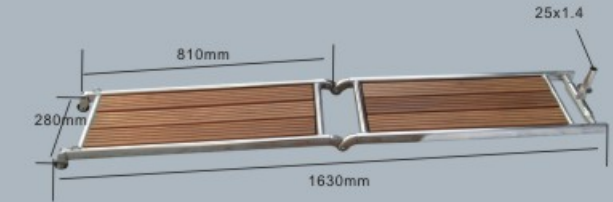
Made in stainless steel AISI 316 highly polished.



Part No	Width	Length	Diameter
19515	450mm	390mm	25mm

MIRROR POLISHED STAINLESS STEEL FOLDABLE GANGWAYS

Made in stainless steel AISI 316 highly polished.



Part No	Steps	Width	Length	Diameter
4264301	2	280mm	1630mm	25mm

WOOD PLATFORM

Made in stainless steel AISI 316 highly polished.



Part No	Width	Length	Diameter
1070	550mm	1700mm	25mm
1071	550mm	2000mm	25mm
1072	550mm	2300mm	25mm

WOOD PLATFORM

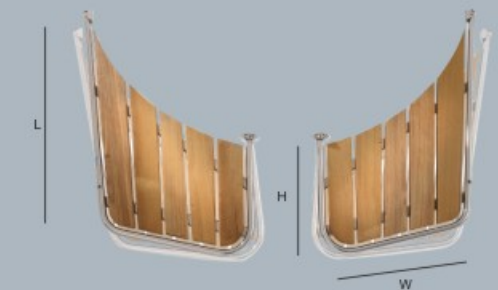
Made in stainless steel AISI 316 highly polished.



Part No	Width	Length	Diameter
1069	550mm	1300mm	25mm
1069A	550mm	1300mm	30mm

WOOD PLATFORM

Made in stainless steel AISI 316 highly polished.



Part No	Height	Width	Length	Diameter
1090	430mm	530mm	850mm	32mm
1091	470mm	650mm	950mm	32mm



PLATFORM

www.chnfuyou.com

WOOD PLATFORM W / SEPARATE LADDER

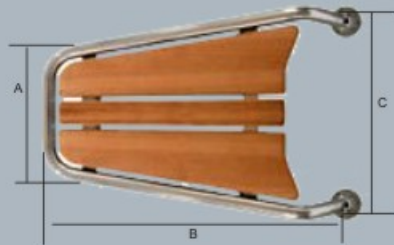
Made in stainless steel AISI 316 highly polished.



Part No	Steps	Width	Length	Diameter
1080BS2	2	500mm	750mm	32mm
1080BS3	3	500mm	750mm	32mm

WOOD PLATFORM

Made in stainless steel AISI 316 highly polished.



Part No	A	B	C	Diameter
1080	330mm	750mm	500mm	32mm
1080A	280mm	500mm	350mm	32mm

WOOD PLATFORM WITH TELESCOPIC LADDER

Stainless steel AISI 316 highly polished, with anti-sliding plastic material on steps.



Part No	Steps	Width	Length	Diameter
1082A2	2	330mm	650mm	32mm
1082A3	3	330mm	650mm	32mm

WOOD PLATFORM

Made in stainless steel AISI 316 highly polished.



Part No	Width 1	Width 2	Length	Diameter
1084	520mm	330mm	1150mm	40mm

WOOD PLATFORM

Made in stainless steel AISI 316 highly polished.



Part No	Width	Length	Diameter
1082	330mm	650mm	32mm

WOOD PLATFORM

Made in stainless steel AISI 316 highly polished.



Part No	Width	Length	Diameter
1081	330mm	750mm	32mm

WOOD PLATFORM WITH TELESCOPIC LADDER

Stainless steel AISI 304 highly polished, with anti-sliding plastic material on steps.



Part No	Steps	Width	Length	Diameter
1080A2	2	350mm	500mm	32mm
1080A3	3	350mm	500mm	32mm

WOOD PLATFORM

Made in stainless steel AISI 316 highly polished.



Part No	Width 1	Width 2	Length	Diameter
1083	520mm	330mm	1150mm	40mm



STEERING WHEEL

www.chnfuyou.com

STEERING WHEEL

Stainless Steel AISI316



Part No	Diameter	Spoke	D
7402	395mm	5	25mm
7403	457mm	5	25mm
7404	510mm	5	25mm

STEERING WHEEL

Stainless Steel AISI316



Part No	Diameter	Spoke	D
7397S	18"	5	25mm
7398S	20"	5	25mm
7399S	22"	5	25mm
71400S	24"	5	25mm
71401S	26"	5	25mm
71402S	28"	5	25mm

STEERING WHEEL

Stainless Steel AISI316



Part No	Diameter	Spoke	D
7507	350mm	5	25mm

STEERING WHEEL

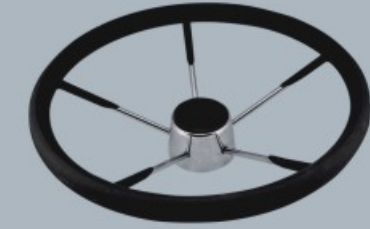
Stainless Steel AISI316



Part No	Diameter	Spoke	D
7410	345mm	3	25mm
7411	395mm	3	25mm

STEERING WHEEL

Stainless Steel AISI316



Part No	Diameter	Spoke	D
7405(WHITE)	350mm	5	25mm
7406(BLACK)	350mm	5	25mm
7407(WHITE)	400mm	5	25mm
7408(BLACK)	400mm	5	25mm

STEERING WHEEL

Stainless Steel AISI316



Part No	Diameter	Spoke	D
7500	345mm	5	25mm
7501	395mm	5	25mm
7502	457mm	5	25mm

STEERING WHEEL

Stainless Steel AISI316



Part No	Diameter	Spoke	D
7400B	345mm	3	25mm
7401B	395mm	3	25mm

FITTINGS TO STEERING WHEEL

Stainless Steel AISI316



Part No	Size
7400C	70mm
7400D	19*25.4mm
7400E	19*25.4mm



HANDRAIL

www.chnfuyou.com

HANDRAIL WITH SCREW

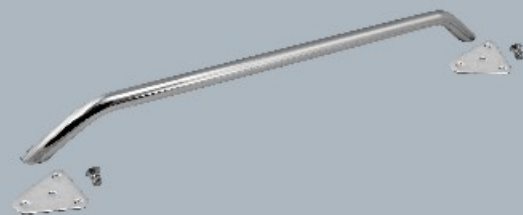
Stainless Steel AISI316/304



Part No	Length	Diameter
30150	300mm	25mm
30152	400mm	25mm
30154	500mm	25mm
30155	600mm	25mm

NEW TYPE OVAL HANDRAIL

Stainless Steel AISI316



Part No	Length	Diameter
31182	300mm	25mm
31183	450mm	25mm
31184	600mm	25mm
31185	750mm	25mm
31186	900mm	25mm

HANDRAIL WITH BASE

Stainless Steel AISI316



Part No	Length	Diameter
30160	200mm	22mm
30162	300mm	22mm
30163	400mm	22mm
30164	500mm	22mm
30165	600mm	22mm
30166	800mm	22mm
30170	1000mm	22mm

HANDRAIL

Stainless Steel AISI316



Part No	Length	Diameter
31187	230mm	19/25mm
31188	305mm	19/25 mm
31189	406mm	19/25mm
31190	457mm	19/25mm
31191	610mm	19/25mm

HANDRAIL

Stainless Steel AISI316



Part No	Length	Diameter
31150	200mm	22mm
31151	300mm	22mm
31152	400mm	22mm
31153	500mm	22mm
31154	600mm	22mm
31155	800mm	22mm
31156	1000mm	22mm

HANDRAIL

Stainless Steel AISI316



Part No	Length	Diameter
31192	305mm	22mm
31193	450mm	22mm
31194	610mm	22mm

NEW TYPE OVAL HANDRAIL

Stainless Steel AISI316



Part No	Length	Diameter
31160	200mm	22mm
31162	300mm	22mm
31163	400mm	22mm
31164	500mm	22mm
31165	600mm	22mm
31166	800mm	22mm
31170	1000mm	22mm

HANDRAIL

Stainless Steel AISI316/304



Part No	Length	Diameter
30012	300mm	22mm
30018	450mm	22mm
30024	610mm	22mm

www.chnfuyou.com

HANDRAIL



HANDRAIL

Stainless Steel AISI316



Part No	Length	Diameter
30140	300mm	25mm
30141	500mm	25mm
30142	600mm	25mm
30143	800mm	25mm

HANDRAIL

Stainless Steel AISI316



Part No	Length	Diameter
300212	220mm	18mm
300213	195mm	25mm

HANDRAIL



Part No	Length	Diameter
3001	218mm	19mm

HANDRAIL



Part No	Length	Diameter
31157	195mm	22/32mm
31158	254mm	22/32mm
31159	394mm	22/32mm

OVAL HANDRAIL



Part No	Length	Diameter
30144	300mm	19/25mm

HANDRAIL



Part No	Length	Diameter
30145	386mm	22mm

STUDDED HANDRAIL



Part No	Length	Diameter
30146	184mm	22mm

STUDDED HANDRAIL W/ SS WAHSER



Part No	Length	Diameter
30147	222mm	19/25mm



HANDRAIL

www.chnfuyou.com

STUDED HANDRAIL W/ PLASTIC WAHSER



Part No	Length	Diameter
30148	222mm	19/25mm

BENT HANDRAIL



Part No	Length	Diameter
36866	385mm	22mm

LONG GRAB HANDLE



Part No	Length	Diameter
31490	1040mm	22mm

HANDRAIL Stainless Steel AISI316



Part No	LxW	Diameter
31178	450x319mm	25mm
31179	600x480mm	25mm
31180	500x320mm	32mm
31181	600x480mm	32mm

3-LEG HANDRAIL



Part No	Length	Diameter
33383	865mm	22mm

HANDRAIL Stainless Steel AISI316



Part No	LxW	Diameter
31175	610x325mm	25mm
31176	740x325mm	25mm

CURVED GRABHANDLE



Part No	Length	Diameter
33585	699mm	22mm

HANDRAIL Stainless Steel AISI316



Part No	LxW	Width
31177	580x485mm	25mm



VARIETY

www.chnfuyou.com

HANDRAIL Stainless Steel AISI316/304



Part No	LxW	Diameter
31172	270x130mm	25mm
31174	270x130mm	25mm

HOOK Stainless Steel AISI316/304



Part No	Length	Diameter 1	Diameter 2
206050	6x50mm	6mm	2mm
208050	8x50mm	8mm	2.5mm
208065	8x65mm	8mm	2.5mm
201065	10x65mm	10mm	3mm

SS AFT GATE



Part No	Height	Width	Tube Diameter
5278	643mm	560mm	22mm

SS FRONT GATE



Part No	Height	Width	Tube Diameter
5277	633mm	500mm	22mm

SWING BACK ARM 35"



Part No	Width	Height	Diameter
5118	869mm	754mm	32mm

SWING BACK ARM 53"



Part No	Width	Height	Diameter
5119	1326mm	754mm	32mm

SWING BACK BRACKET IN COUPLE



Part No	Height	Plate Size	Diameter
5098	636mm	186*186mm	32mm

SWING BACK BRACKET,BOX



Part No	Height	Plate Size	Diameter
5013	594mm	266*173/239mm	32mm



VENT

www.chnfuyou.com

LOUVERED VENTILATOR

Stainless Steel AISI304



Part No	Louvres	Width	Length	Height
99811	10	530x112mm	506x90mm	32mm
99812	10	530x76mm	506x40mm	32mm
99813	6	325x112mm	303x90mm	32mm
99814	5	287x112mm	250x90mm	42mm
99815	4	210x112mm	187x90mm	42mm
99816	3	210x112mm	187x90mm	42mm

LOUVERED VENT

Stainless Steel AISI304



Part No	LxW
0057-A	127 x 66mm
99063	127 x 115mm
0057-B	120 x 120mm
0057-G	228 x 127mm
0057-C	230 x 115mm
0057-D	360 x 185mm

LOUVERED VENT

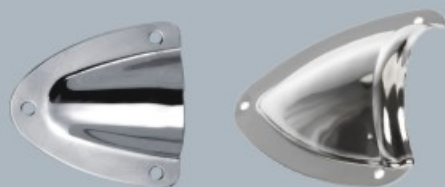
Stainless Steel AISI304



Part No	LxW
0057-H	212x57mm

VENTILATOR

Stainless Steel AISI304



Part No	LxW
045A	43x42mm
045B	57x55mm
99832	133x150mm

BUTTERFLY VENT

Stainless Steel AISI304



Part No	Diameter	Thickness
00579	150mm	0.8mm
00577	102mm	0.8mm
99808	125mm	0.8mm

LOUVERED VENT

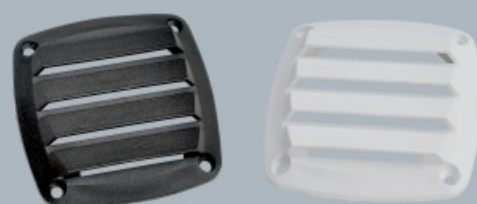
Stainless Steel AISI304



Part No	Diameter	Thickness
99810	102mm	0.8mm
0057-E	121mm	0.8mm
99809	126mm	0.8mm

PLASTICS / VENTILATOR SERIES / NYLON VENTILATOR

Made of ABS



Part No	Louvres	Width	Length	Height
99818	3	128mm	128mm	19mm
99835	3	195mm	105mm	18.5mm

INSPECTION

Nylon



Part No	D	Diameter 1	Diameter 2
99822	4"	102/113mm	145mm
99823	5"	127/143mm	175mm
99824	6"	152/164mm	205mm

www.chnfuyou.com

VARIETY



INSPECTION

Nylon



Part No	D	Diameter 1	Diameter 2
99832	4"	102/113mm	145mm
99833	5"	127/143mm	175mm
99834	6"	152/164mm	205mm

FOLDABLE FENDER BASKET

Stainless Steel AISI316/304



Part No	Size
71385	FOR UNDER 7" FENDER
71386	FOR FENDER 7"-9"
71387	FOR FENDER 9"-11"

EASY FENDER BASKET

Stainless Steel AISI316/304



Part No	Length	Diameter
71285	425-320mm	170mm
71286	425-320mm	195mm
71287	425-320mm	215mm
71288	425-320mm	230mm
71289	550-260mm	260mm
71290	580-305mm	305mm

FITTINGS OF FENDER BASKET



Part No	Length	Diameter
72185A	45X45mm	
72185B	22/25mm	54mm

LOUVERED VENT

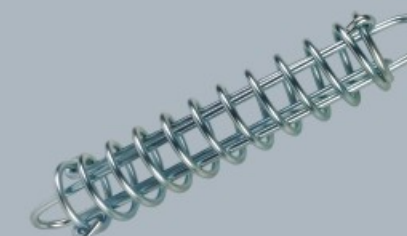
Stainless Steel AISI304



Part No	Length	Width	Thickness
0057-I	127mm	127mm	0.8mm

GALVANIZED MOORING SPRING

Stainless Steel AISI304



Part No	Length	Diameter
20118906	275mm	5mm
20118909	330mm	6mm
20118912	390mm	7mm
20118917	455mm	9mm
20118919	405mm	12mm

MOORING SPRING

Stainless Steel AISI304



Part No	Length	Diameter
20119906	270mm	5mm
20119908	320mm	6mm
20119911	320mm	7mm
20119912	320mm	8mm
20119914	410mm	9mm
20119915	390mm	10mm
20119916	390mm	11mm
20120102	255mm	7mm
20120103	300mm	9mm

MOORING SPRING, EXTRA MODEL

Stainless Steel AISI304



Part No	Length	Diameter
20120206	340mm	5mm
20120208	360mm	6mm
20120211	390mm	7mm
20120214	460mm	9mm
20120215	460mm	11mm
20120216	460mm	12mm



STANCHION
316LStainless steel



Part No	Length	Diameter
34940	400mm	14mm
34941	600mm	20mm
34942	800mm	25mm

SS STANCHION mirror polished Nylon-head(black)
Stainless Steel AISI316/304



Part No	Length	Diameter
3117508	500mm	25mm
3117509	610mm	25mm

STANCHION
316LStainless steel



Part No	Length	Diameter
34592	555mm	13mm

STANCHION
316LStainless steel



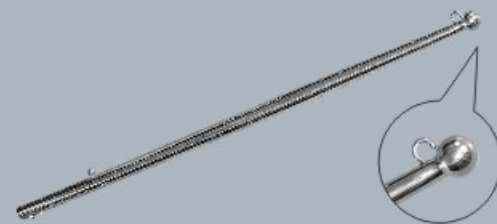
Part No	Length	Diameter
34690	385mm	13mm

STANCHION
316LStainless steel



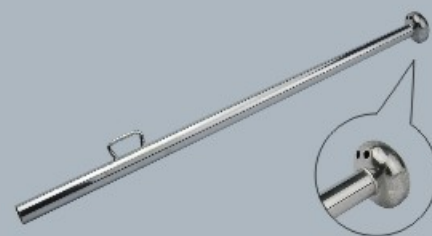
Part No	Length	Diameter
34691	356mm	13mm

STANCHION
316LStainless steel



Part No	Length	Diameter
34950	610mm	20mm
34951	750mm	25mm
34952	900mm	25mm
34953	1200mm	25mm

STANCHION
316LStainless steel



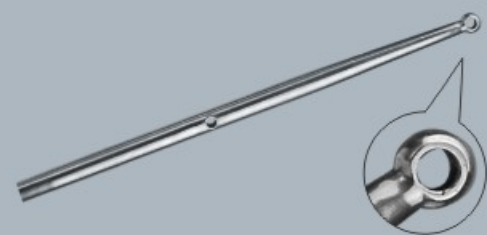
Part No	Length	Diameter
34594	610mm	25mm
34595	750mm	25mm
34596	900mm	25mm
34597	1200mm	25mm

STANCHION
316LStainless steel



Part No	Length	Diameter
3117501	465mm	25mm
3117502	610mm	25mm
3117503	725mm	25mm

STANCHION
316LStainless steel



Part No	Length	Diameter
3117504	465mm	25mm
3117505	610mm	25mm
3117506	725mm	25mm



Adjuster Arm-stainless steel
Stainless Steel AISI316/304



Part No	Length
80633	240-410mm

HOLLOW BACK RUB RAIL
Stainless Steel AISI316



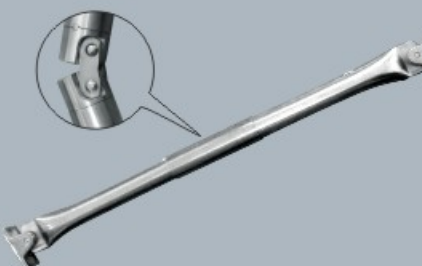
Part No	WxW
04016	1.2×20×4.6mm
04017	1.5×28×7mm

HATCH SPRING ADJUSTER
Stainless Steel AISI316/304



Part No	Length	Diameter
71279	220mm	11mm
71281	260mm	11mm

FOLDING BRACKET
Stainless Steel AISI316/304



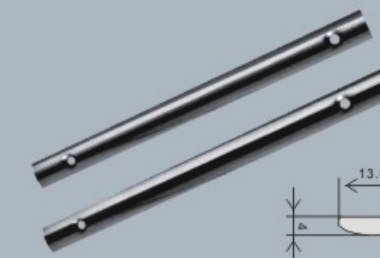
Part No	Length	Diameter
70635	485mm	25mm

HATCH SPRING ADJUSTER
Stainless Steel AISI316/304



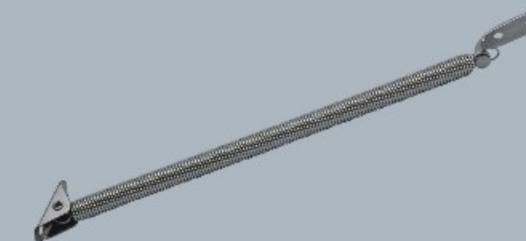
Part No	Length	Diameter
80634	322-560mm	9/12mm

SOLID BACK RUB RAIL
Stainless Steel AISI316



Part No	WxW
04014	4×10mm
04015	4×14mm

HATCH SPRING ADJUSTER
Stainless Steel AISI316/304



Part No	Length	Diameter
71277	220mm	11mm
71278	260mm	11mm

TELESCOPING TABLE BRACKET
Stainless Steel AISI316



Part No	Length	Diameter
70641	305-470mm	30mm



STANCHION HOLDER
Stainless Steel AISI316/304



Part No	Length	Diameter
34586	70mm	25mm

STANCHION HOLDER
Stainless Steel AISI316/304



Part No	Length	Diameter
34588	73mm	25mm

BOTTOM BOARD LIFTING HANDLE
Stainless Steel AISI316



Part No	Width	Length	Diameter
71386	36mm	88mm	4.2mm

STANCHION HOLDER
Stainless Steel AISI316/304



Part No	Length	Diameter
34587	70mm	25mm

LATCH



Part No	Length	Width
70610	150mm	59mm

DOOR HOLDER



Part No	Length	Width
70610	70mm	32mm

ANCHOR CHOCK
Stainless Steel AISI316/304



Part No	Width	Height
71160	110x110mm	275mm
71161	150x150mm	390mm

SUPPORT POLE



Part No	Length	Diameter
5299	721mm	16mm



EYE PLATE STAMPED



Part No	LxW	Diameter
71803	30x35mm	5mm
71804	35x40mm	6mm
71805	40x50mm	8mm
71806	45x60mm	9mm

EYE PLATE



Part No	LxW	Diameter
71803A	30x35mm	5mm
71804A	35x40mm	6mm
71805A	40x50mm	8mm
71806A	45x60mm	9mm

EYE PLATE



Part No	LxW	Diameter
76740	40x70mm	5mm

ALUMINUM PART



Part No	Length	Width
76740	130mm	55mm

ALUMINUM TRANSOME



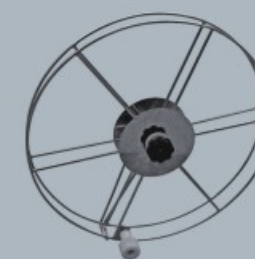
Part No	Length	Width	Thickness
5196	282mm	69mm	24mm

WOOD PLUG



Part No	Size
VP10/VP11	4mm-14.8mm
VP12/VP13	8mm-14.8mm
VP14	6.5mm-14.8mm
VP15/VP16	14mm-21.9mm
VP17	18mm-28mm
VP18	22.5mm-33mm
VP19	27.5mm-38mm

HOSE REEL
Stainless Steel AISI316/304



Part No	Width	Diameter
71255	28mm	300mm
71256	28mm	420mm
71257	38mm	300mm
71258	38mm	420mm

HOSE REEL
Stainless Steel AISI316/304



Part No	Width	Diameter
71255A	28mm	300mm
71256A	28mm	420mm
71257A	38mm	300mm
71258A	38mm	420mm



HOLDER

www.chnfuyou.com

FISHING ROD HOLDER Stainless Steel AISI316



Part No	Length	Diameter
500777	250mm	50mm

FISHING ROD HOLDER Stainless Steel AISI316



Part No	Length	Diameter
500768	245mm	45mm

RAIL MOUNT ROD HOLDERS-SLOTTED Stainless Steel AISI316/304



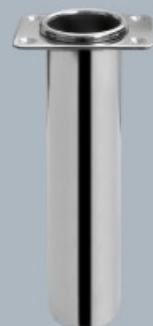
Part No	Length	Diameter
500792	245mm	50mm

FISHING ROD HOLDER Stainless Steel AISI316



Part No	Length	Diameter
500770	230mm	50mm
500770B	230mm	50mm

AISI 316 STAINLESS STEEL ROD HOLDER



Part No	Length	Diameter
500881	210mm	45mm

FISHING ROD HOLDER Stainless Steel AISI316



Part No	Length	Diameter
500773	235mm	50mm

FISHING ROD HOLDER Stainless Steel AISI316



Part No	Length	Diameter
500761	200mm	45mm
500762	200mm	45mm/75°

FISHING ROD HOLDER Stainless Steel AISI316



Part No	Length	Diameter
500774	300mm	50mm



HOLDER

www.chnfuyou.com

AISI 316 STAINLESS STEEL ROD HOLDER



Part No	Length	Diameter
500768B	240mm	50mm

ROD HOLDER OF MARINE HARDWARE Plastic



Part No	Length	Diameter
500783	220mm	50mm

AISI 316 STAINLESS STEEL ROD HOLDER



Part No	Length	Diameter
500880	240mm	50mm

SIDE MOUNT ROD HOLDER Plastic



Part No	Length	Diameter
500791	305mm	45mm

FISHING ROD HOLDER Stainless Steel AISI316



Part No	A	B	C	D	L
500769	108.5mm	48mm	87mm	50mm	195mm

PLASTIC FISHING ROD HOLDER



Part No	Length	Diameter
500879	270mm	43mm

FISHING ROD HOLDER Stainless Steel AISI316



Part No	Length	Diameter
500775	215mm	50mm

FISHING ROD HOLDER-CAST HEAD Stainless Steel AISI316



Part No	Length	Diameter
500884	200mm	50mm



HOLDER

www.chnfuyou.com

FISHING ROD HOLDER



Part No	Length	Diameter	Angle
5233	225mm	50mm	0°
5225	225mm	50mm	15°
5224	225mm	50mm	30°

FISHING ROD HOLDER



Part No	Length	Diameter	Angle
500887	235mm	50mm	0°
500888	235mm	50mm	15°
500889	235mm	50mm	30°

FISHING ROD HOLDER Stainless Steel AISI316



Part No	Length	Diameter
500771	249mm	50mm

FISHING ROD HOLDER Stainless Steel AISI316



Part No	Length	Diameter
500770C	230mm	50mm

FISHING ROD HOLDER Stainless Steel AISI316



Part No	Length	Diameter
500876	274mm	50mm

FISHING ROD HOLDER Stainless Steel AISI316



Part No	Length	Diameter
500879A	270mm	48mm

ROD RACKS(STAINLESS STEEL) ROD RACK of 3/4 Stainless Steel AISI316/304



Part No	Holder	Length	Width	Diameter
500787	3	295mm	220mm	42mm
500788	4	420mm	220mm	42mm

ROD AND KNIFE HOLDERS Plastic



Part No	Holder	Length	Width	Diameter
500784	2	270mm	255mm	45mm
500785	3	435mm	255mm	45mm
500786	4	600mm	255mm	45mm



HOLDER

www.chnfuyou.com

TUBE ROD HOLDER RACK

Stainless steel AISI 316 highly polished, with anti-sliding plastic material on steps.



Part No	Holder	Length	Width	Diameter
500763	3	528mm	195mm	45mm
500764	4	725mm	195mm	45mm

BAIT BOARD

Stainless Steel AISI316/304



Part No	Holder	Length	Width	Diameter
500795	4	625mm	386mm	50mm

BRACKET FOR LIFERAFT

Stainless Steel AISI316/304



Part No	Length	Width
12700	1000mm	440mm

VERTICAL BRACKET FOR LIFERAFT

Stainless Steel AISI316/304



Part No	Length	Width
01103	480-580mm	280-380mm

FISHING ROD HOLDER

Stainless Steel AISI316



Part No	Length	Diameter
500765	442mm	425mm
500766	442mm	425mm

SMALL BAIT BOARD



Part No	Length	Diameter
500796	375x460mm	25mm

BRACKET FOR LIFERAFT

Stainless Steel AISI316/304



Part No	Length	Width
01110	750mm	520mm

HORIZONTAL BRACKET FOR LIFERAFT

Stainless Steel AISI316/304



Part No	Length	Width
01104	700-850mm	380-500mm



ROLLER

www.chnfuyou.com

BOW ROLLER
Stainless Steel AISI316/304



Part No	Length	Width
41510	300mm	80mm
41511	400mm	80mm
41512	500mm	80mm

BOW ROLLER
Stainless Steel AISI316/304



Part No	Length	Width
45007	197mm	57mm
45008	222mm	57mm
45009	248mm	57mm

SINGLE WHEEL ROLLER
Stainless Steel AISI316/304



Part No	Length	Width
44210	155mm	51mm

BOW ROLLER
Stainless Steel AISI316/304



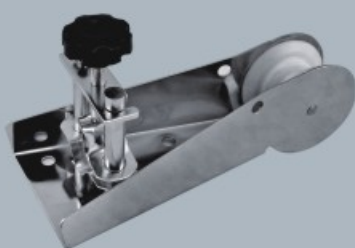
Part No	Length	Width
4AR-3	280mm	55mm
4AR-7	230mm	51mm

BOW ROLLER WITH ANCHOR BLOCKING DEVICE
Stainless Steel AISI316/304



Part No	Length	Width
41520	230mm	55mm

BOE ROLLER WITH ANCHOR BLOCKING DEVICE
Stainless Steel AISI316/304



Part No	Length	Width
45002	250mm	47mm

BOW ROLLER
Stainless Steel AISI316/304



Part No	Length	Width
4URM-2	390mm	50mm

BOW ROLLER
Stainless Steel AISI316/304



Part No	Length	Width
4URM-3	590mm	100mm
4URM-4	455mm	87mm



ROLLER

www.chnfuyou.com

ANCHOR ROLLER
Stainless Steel AISI316/304



Part No	Length	Width
45004	150mm	75mm

ANCHOR ROLLER
Stainless Steel AISI316/304



Part No	Length	Width
45005	156mm	50mm

DOUBLE WHEEL ROLLER
Stainless Steel AISI316/304



Part No	Length	Width
44217	328mm	96mm

ANCHOR ROLLER
Stainless Steel AISI316/304



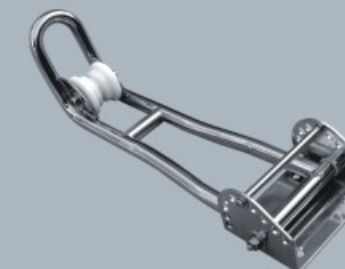
Part No	Length	Width
1095	400mm	145mm

BOW ROLLER MOLLER MODEL "SKANDIK"



Part No	Length	Width	Height	Diameter
44308	726mm	120mm	200mm	25mm

BOW ROLLER MOLLER MODEL "SKANDIK"



Part No	Length	Width	Height	Diameter
44300	535mm	120mm	150mm	25mm
44301	726mm	120mm	200mm	25mm

ANCHOR ROLLER
Stainless Steel AISI316/304



Part No	Length	Width
45006	160mm	87mm

REPLACEMENT ROLLER
Nylon



Part No	Length	Diameter
45031	46mm	86mm
45032	46mm	61mm
45033	42mm	63mm
45034	18mm	54mm
45035	18mm	68mm
45036	73mm	70mm
45037	85mm	77mm
45038	74mm	102mm



S. STEEL. DAVITS FOR FASTENING ON DECK

Stainless Steel AISI316/304



Part No	Length	MAX.LOAD	Diameter
01972	1050mm	60kg	40mm
01973	1050mm	85kg	60mm

SS FOG HORN



Part No	Length
76133	185mm

WIND INDICATOR



Part No	Length	Height
9004120	410mm	320mm

TUBULARS RADAR REFLECTOR



Part No	Length	Diameter
071525	360mm	50mm
071526	600mm	50mm

DAVITS FOR FASTENING ON DECK



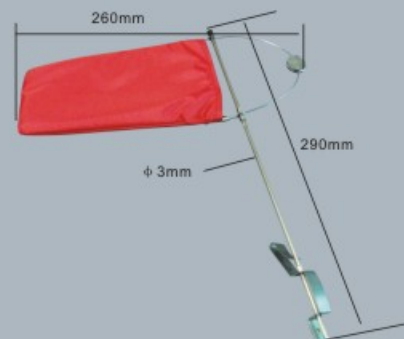
Part No	Length	Width	Diameter
44305	1430mm	750mm	25mm
44306	1530mm	875mm	25mm
44307	1460mm	1430mm	32mm

PLASTIC FOG HORN



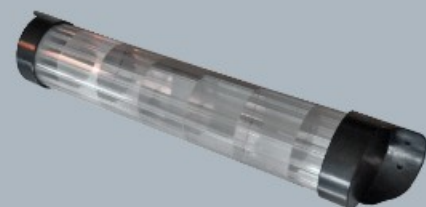
Part No	Length
76134	280mm

WIND INDICATOR NYLON FLAG



Part No	Length	Width
9004119	290mm	260mm

TUBULARS RADAR REFLECTOR



Part No	Length	Diameter
071523	600mm	50mm
071524	600mm	100mm



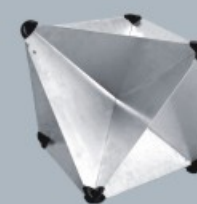
FIXED SEAT PEDESTAL

Stainless Steel AISI316/304



Part No	Length	Width	Diameter
01945	740mm	163mm	50mm
01947	600mm	197mm	60mm
01947A	600mm	197mm	60mm
01949	740mm	320mm	90mm

RADAR REFLECTOR



Part No	Length
071512	215*215*300mm
071516	300*300*415mm
071518	340*340*470mm

ALUMINUM SLEEVE



Part No	Length	Diameter
0456902A	8mm	2mm
0456925A	9.5mm	2.5mm
0456903A	10.5mm	3mm
0456904A	15mm	4mm
0456905A	19mm	5mm
0456906A	23mm	6mm
0456908A	28mm	8mm
04569010A	33mm	10mm

ALUMINUM PEDESTAL/HEIGHT ADJUSTMENT



Part No	Height	Base Diameter	Tube Diameter
1946	555-720mm	175mm	60mm

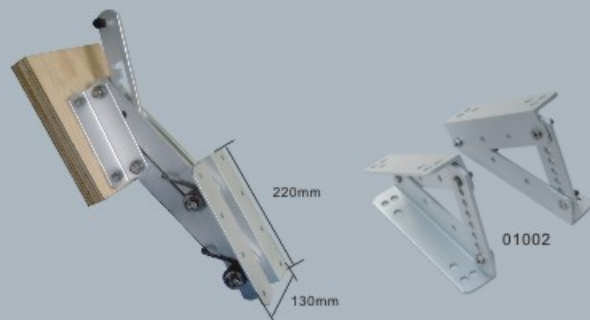
COPPER SLEEVE



Part No	Length	Diameter
0456902	8mm	2mm
0456925	9.5mm	2.5mm
0456903	10.5mm	3mm
0456904	15mm	4mm
0456905	19mm	5mm
0456906	23mm	6mm
0456908	28mm	8mm
04569010	33mm	10mm

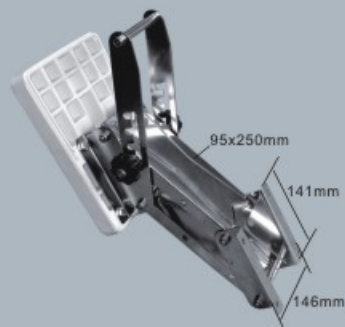


MOTORBRACKET / MONTERINGSBESLAG ASENNUSHELA



Part No	Motors	Width	Travel
01003M	HP15	200mm	310mm
01002	30°		

OUTBOARD MOTOR BRACKET,LARGE TYPE



Part No	Motors	Width	Travel
01005	HP15	210mm	290mm

MOTORBRACKET



Part No	Motors	Width	Travel
01003S	HP15	200mm	310mm

S.S.TEEL MOTOR BRACKET



Part No	MAX.LOAD	Width
01006	50KG	255x210x285

OUTBOARD MOTOR EXTENSIONHANDLE TELESCOPIC MODEL made of anodized aluminium pipe



Part No	Motors	Width	Travel
01003B	HP30	400mm	310mm

OUTBOARD MOTOR BRACKET,NEW TYPE



Part No	Motors	Width	Travel
01007	HP15	210mm	290mm

OUTBOARD MOTOR BRACKET,SMALL TYPE



Part No	Motors	Width	Travel
01004	HP10	200mm	280mm

OUTBOARD MOTOR BRACKET



Part No	Motors	Width	Travel
01008	HP10	200mm	280mm

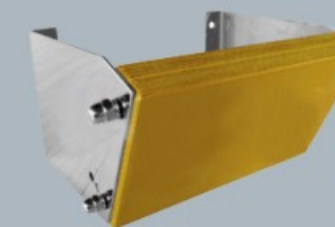


OUTBOARD MOTOR BRACKET,LARGE TYPE



Part No	Motors	Width
01005M	HP10	210mm

SUPPORTO MOTORE



Part No	Motors	Width
71533	HP10	260mm

SUPPORTO MOTORE



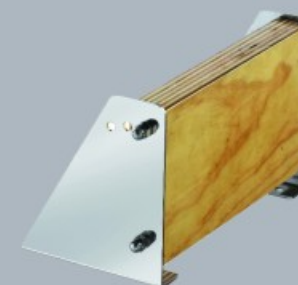
Part No	Motors	Width
71234	HP10	260mm

FOL D-UP FOOTREST



Part No	LxW
70301	7.5X12X8"

SUPPORTO MOTORE PER PLANCETTE



Part No	Motors	Width
71235	HP12	260mm

1073/N SUPPORTO MOTORE INOX Stainless Steel AISI316/304



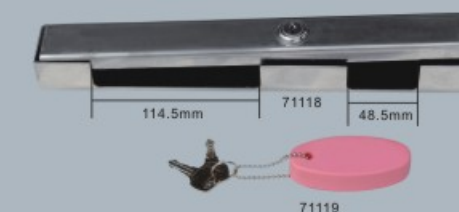
Part No	Motors	Width
71136	HP15	

MOTOR-LOCK Stainless Steel AISI316/304



Part No	Length	Width
71117	305mm	40mm

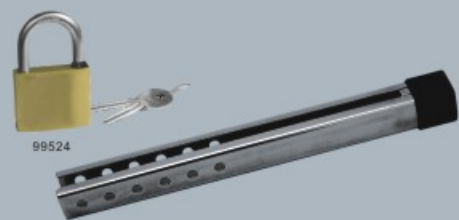
MOTOR-LOCK Stainless Steel AISI316/304



Part No	Length	Width
71118	305mm	40mm
71119		



MOTOR-LOCK
Stainless Steel AISI316/304



Part No	Length
99525	235mm
99526	280mm
99524	40mm

JAW TO JAW



Part No	Diameter
72341	6mm

REFURN ROO/COOPLING ROD
Stainless Steel AISI316/304



Part No	Length	Diameter
9003	380mm	11mm

DUAL-FEED PROFESSIONAL RECTANGULAR CUPS



Part No	Length	Width
71254	380mm	85x125mm

OUTBOARD MOTOR EXTENSIONHANDLE FIXED MODEL
made of anodized aluminium pipe



Part No	Length	Diameter
9001	825/1140mm	25/30mm

JAW TO JAW



Part No	Diameter
72342	6.35mm

MOTOR FLUSHER W/SQUARE CAP



Part No	Length
71250	200mm
71251	280mm

MOTOR FLUSHER W/SQUARE CAP



Part No	Length
71252	200mm
71253	280mm



TABLE BRACKET
Stainless Steel AISI316/304



Part No	Length	Width	Height	MAX.LOAD
70634	320mm	165mm	60mm	150KGS

BOLLARD



Part No	Length
76155	160mm
76156	160mm
76157	200mm

UTILITY HOOK



Part No	Length
S08140	80mm

SPRING CLAMP



Part No	Length	Diameter
70615	1 1/4"maxID	5/8"min ID
70616	1 3/4"maxID	1"min ID

TABLE BRACKET
Stainless Steel AISI316/304



Part No	Length	Width	Height	MAX.LOAD
70633	165mm	165mm	25mm	150KGS

NYLON CLEAT



Part No	Height	Length
76158	31mm	150mm

CLAMP



Part No	Length
S08141	76mm

BOAT HOOK HOLDERS



Part No	MAX POLE O.D
70620	39mm



CARRIER

www.chnfuyou.com

RUBBER BOAT CARRIER

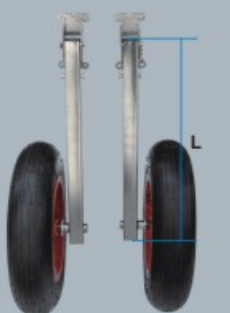
made in S.Steel square pipe with two rubber wheels



Part No	D	L
3022	35x35mm	521mm

RUBBER BOAT CARRIER

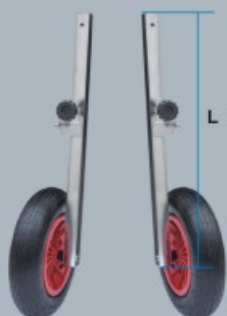
made in S.Steel square pipe with two rubber wheels



Part No	D	L
3023	30x30mm	500mm

RUBBER BOAT CARRIER

made in S.Steel square pipe with two rubber wheels



Part No	D	L
3024	30x30mm	665mm

RUBBER BOAT CARRIER

made in S.Steel square pipe with two rubber wheels



Part No	D	L
3025	30x30mm	500mm

RUBBER BOAT CARRIER

made in S.Steel round pipe with two rubber wheels



Part No	D	L
3020	30mm	360mm

INFLATABLE WHEEL



Part No	Diameter
71265	360mm
71265A	260mm

CHARIOT TRANSPORT 170kg

made in S.Steel square pipe with two rubber wheels



Part No	Length	Width
71266	2700mm	1850mm

OUTBOARD ENGINE CARRIERS

Stainless Steel AISI316/304



Part No	Length	Width	MAX.LOAD
71269	1085mm	430mm	60KG

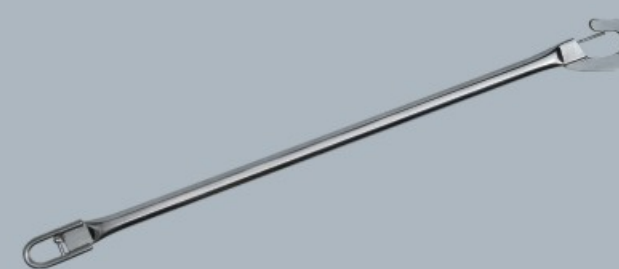
www.chnfuyou.com

VARIETY



BOAT HOOK

Stainless Steel AISI316/304



Part No	Length	Diameter 1	Diameter 2
76129A	950mm	80mm	25mm
76129B	1450mm	80mm	30mm

ANODIZED ALUMINIUM WITH PLASTIC PADDLE



Part No	Length	Diameter
75641	1200mm	30mm
75642	1650mm	30mm

PLASTIC PADDLE WITH HANDLE



Part No	Length	Diameter
75643	1200mm	25mm
75644	1400mm	25mm
75645	1800mm	25mm
75646	1400mm	30mm

ENGINE TROLLEY



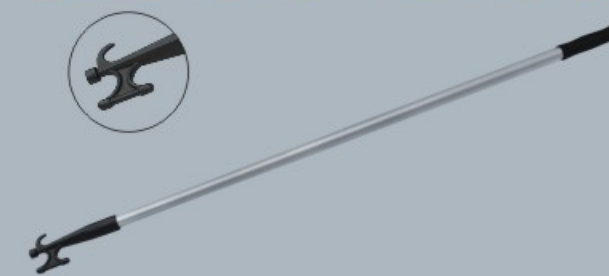
Part No	Length	Width	Diameter
71268	1178mm	520mm	25mm

ANODIZED ALUMINIUM BOAT HOOK MODEL FORCE-TELESCOPIC



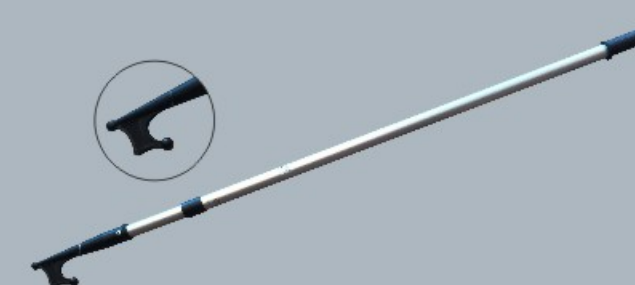
Part No	Length	Diameter
76120	1200-2200mm	25mm/30mm

ANODIZED ALUMINIUM BOAT HOOK MODEL FORCE-TELESCOPIC



Part No	Length	Diameter
76122	1300mm	25mmmm
76123	1600mm	25mmmm
76124	1800mm	25mmmm
76125	2100mm	25mmmm

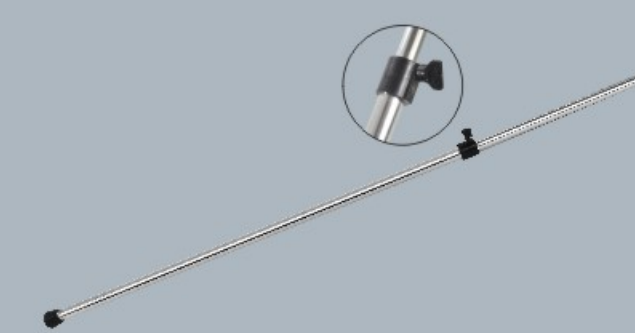
ANODIZED ALUMINIUM BOAT HOOK MODEL FORCE-TELESCOPIC



Part No	Length	Diameter
76130	1200-2200MM	25/28mm

ADJUSTABLE SUPPORT POLE

Aluminum



Part No	Length	Diameter
71318	960-1800mm	19/22mm



CROSS BOLLARD DOUBLE
Stainless Steel AISI316/304



Part No	Length	Diameter
71272	120x340mm	50mm

STAINLESS STEEL HANDRAIL
Stainless Steel AISI316



Part No	Length	Width	Diameter
33307	233mm	78mm	30mm

CLEAT
Stainless Steel AISI316



Part No	Length	Width	Height
33305	305mm	200mm	84mm

S.S HEAVY DUTY CLEAT
Stainless Steel AISI316



Part No	Length	Height	Diameter
70642	205mm	53mm	20mm

CLEAT



5084



4075

Part No	Length	Width	Height
5084	145mm	26mm	45mm
4075	159mm	22mm	37mm

FOLDING CLEAT



Part No	Length	Width	Height/Deployed
70640	135mm	62mm	53mm

BOLLARD MODEL "SKANDIK"
Stainless Steel AISI316



Part No	Length	Width	Height
033150	150mm	30x90mm	45mm
033205	205mm	35x120mm	55mm
033265	265mm	40x150mm	70mm
033310	300mm	50x160mm	85mm
033366	366mm	60x200mm	90mm

FOLDING CLEAT



Part No	Length	Width	Height/Deployed
70638	147mm	51mm	47mm



FOLDING CLEAT



Part No	Length	Width	Height/Deployed
70637	119mm	40mm	39mm

FOLDING CLEAT



Part No	Length	Width	Height/Deployed
70637B	119mm	40mm	39mm

POP-UP CLEAT



Part No	Length	Width	Height/Deployed
70639	168mm	35mm	100mm

FOLDING STEP



Part No	Base Size	Step Size
70636	107*41mm	81*50mm

CROSS BOLLARD SINGLE
Stainless Steel AISI316



Part No	Length	Diameter
08520	100mm	50mm
08521	120mm	60mm
08524	140mm	70mm
08525	175mm	90mm

BLACK COATED FOLDING STEP



Part No	Base Size	Step Size
70636BC	107*41mm	81*50mm

CROSS BOLLARD SINGLE
Stainless Steel AISI316



Part No	Length	Height
08530	130mm	95mm
08531	160mm	120mm
08532	180mm	142mm
08533	200mm	172mm

ALUMINUM BRACKET



Part No	Length	Width	Height
5266	168mm	242mm	63mm



BRACKET FOR LIFEBUY&LIGHT
Stainless Steel AISI316/304



Part No	Length	Width
500767	170mm	120mm

LIFE RING HOLDER
Stainless Steel AISI316/304



Part No	Length	Diameter
71261	360x570mm	6mm

MARKER LIGHT MOUNTING BRACKET
Stainless Steel AISI316/304



Part No	Length	Height
71231	22-25mm	40mm

BRACKET FOR LIFEBUY&LIGHT
Stainless Steel AISI316/304



Part No	Length	Width
71230	270mm	107mm

RAIL MOUNT BRACKETS



Part No	Length
S08151	25mm

PLASTIC SUPPORT IN NYLON



Part No	Diameter
S08121	35mm
S08122	40mm
S08123	45mm

BRACKET FOR LIFEBUY&LIGHT
Stainless Steel AISI316/304



Part No	Length	Width
71232	170mm	120mm

PAD EYE



Part No	Dimension
60113	5mm
60114	6mm
60115	10mm
60116	13mm
60117	16mm



ROWLOCK
Stainless Steel AISI316/304



Part No	Length	Width
70632	185mm	63mm

ROWLOCK
Stainless Steel AISI316/304



Part No	Length	Width
70631	170mm	55mm

ROWLOCK



Part No	Length	Width
75637	67mm	150mm

SKIN FITTINGS-PLASTIC
Made of ABS



Part No	Diameter	Width
76139	1	94x34x25mm
76140	1-1/8	84x34x28mm
76141	1-1/4	98x42x32mm
76142	1-1/2	103x48x38mm

OARLOCK SOCKET



Part No	Length	Diameter
75638	105mm	35mm

SKIN FITTINGS-PLASTIC
Made of ABS



Part No	Diameter	Width
76135	1	94x34x25mm
76136	1-1/8	84x34x28mm
76137	1-1/4	98x42x32mm
76138	1-1/2	103x48x38mm

HORIZONTAL PLATFORM MOUNTING OPTIONS



Part No	Length	Width	Height
15211	90mm	70mm	30mm

HASP



Part No	Dimension
196	65*23mm
197	91*29mm
198	64*29mm



BOLT

www.chnfuyou.com

SELF TAPPING EYE SCREW

Stainless Steel AISI316/304



Part No	Length	Diameter	A	B
963852	52mm	M6	21mm	13mm
965358	58mm	M6	21mm	13mm
985580	80mm	M8	24mm	15mm
989095	95mm	M8	24mm	15mm

SELF TAPPING EYE SCREW

Stainless Steel AISI316/304



Part No	Length	Diameter	A	B
963883	58mm	M6	21mm	13mm
985584	80mm	M6	21mm	13mm
985581	80mm	M8	24mm	15mm
985582	100mm	M8	24mm	15mm

DOUBLE EYE BOLT

Stainless Steel AISI316/304



Part No	Length	Diameter
971320	60mm	M8
971321	80mm	M8
971322	80mm	M10
971323	100mm	M10

U BOLT

Stainless Steel AISI316/304



Part No	Length	Width	Stock Diameter
913080	230mm	36mm	M8
913110	310mm	48mm	M10

U BOLT

Stainless Steel AISI316/304



Part No	Diameter	O.Length	T.Length	C-C
911090	3/8"	3"	1.25"	1.44"
911091	3/8"	3.94"	2.31"	1.19"
911092	3/8"	4.5"	2.75"	1.44"
911093	3/8"	5"	3.25"	1.44"
911094	3/8"	4"	2.25"	1.44"
911095	3/8"	4.5"	2.75"	1.41"
911096	3/8"	5"	2.75"	1.41"
911097	3/8"	5.44"	3.69"	1.44"
911098	1/2"	4.25"	2.25"	1.88"
911099	1/2"	4.66"	2.5"	1.81"
911100	1/2"	5"	3"	1.81"
911101	1/2"	5.25"	3.25"	1.81"
911102	1/2"	5.31"	3.25"	1.88"
911103	1/2"	5.31"	3.25"	1.88"
911104	1/2"	5.81"	3.75"	1.88"
911105	1/2"	5.88"	3.75"	1.81"
911106	1/2"	6.63"	4.5"	1.75"
911107	5/8"	8"	5"	1.81"

SELF-GASKET EYE BOLT

Stainless Steel AISI316/304



Part No	Length	Diameter	A	B
90630	30mm	M6	21mm	13mm
90640	40mm	M6	21mm	13mm
90660	60mm	M6	21mm	13mm
90835	35mm	M8	24mm	15mm
90850	50mm	M8	24mm	15mm
90880	80mm	M8	24mm	15mm
901050	50mm	M10	28mm	16mm
901080	80mm	M10	28mm	16mm
9010100	100mm	M10	28mm	16mm
9012100	100mm	M12	32mm	19mm
9012120	120mm	M12	32mm	19mm
9012160	160mm	M12	32mm	19mm

U BOLT

Stainless Steel AISI316/304



Part No	Length	Width	Stock Diameter
912507	78mm	35mm	M5
912506	90mm	35mm	M6
912502	105mm	35mm	M8
912501	100mm	35mm	M8
912503	110mm	45mm	M8
912504	120mm	45mm	M8
912508	100mm	50mm	M10
912500	130mm	50mm	M10
912505	155mm	65mm	M12

www.chnfuyou.com

FITTINGS



RAIL FITTING TEE



Part No	Diameter	Angle
03540	7/8"	90°

RAIL FITTING TEE



Part No	Diameter	Angle
03543	7/8"	60°
03543B	1"	60°
03544	7/8"	30°
03544B	1"	30°

ROUND BASE

Stainless Steel AISI316/304



Part No	Diameter	Angle
03244	22mm	90°
03245	25mm	90°
03246	22mm	60°
03247	25mm	60°

WELDABLE ROUND BASE

Stainless Steel AISI316/304



Part No	Diameter	Angle
03260	22mm	90°
03261	25mm	90°
03262	22mm	60°
03263	25mm	60°

WELDABLE RECTANGULAR BASE

Stainless Steel AISI316/304



Part No	Diameter	Angle
03264	22mm	90°
03265	25mm	90°
03266	22mm	90°
03267	25mm	90°

RECTANGULAR BASE

Stainless Steel AISI316/304



Part No	Diameter	Angle
03242	22mm	90°
03243	25mm	90°
03240	22mm	60°
03241	25mm	60°

TEE

Stainless Steel AISI316/304



Part No	Diameter
03248	22mm
03249	25mm
03250	22mm
03251	25mm

ECCENTRIC LATCH

Stainless Steel AISI316/304



Part No	Length	Width
9004122	220mm	40mm

ECCENTRIC LATCH

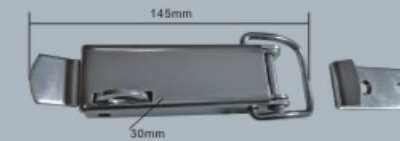
Stainless Steel AISI316/304



Part No	Length	Width
9004121	110mm	30mm

ECCENTRIC LATCH-COVERED

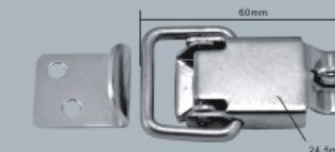
Stainless Steel AISI316/304



Part No	Length	Width
9004117	145mm	30mm

ECCENTRIC LATCH

Stainless Steel AISI316/304



Part No	Length	Width
9004114	60mm	25mm

ECCENTRIC LATCH

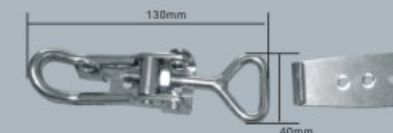
Stainless Steel AISI316/304



Part No	Length	Width
9004115	85mm	15.5mm

ECCENTRIC LATCH

Stainless Steel AISI316/304



Part No	Length	Width
9004113	130mm	26mm

ECCENTRIC LATCH

Stainless Steel AISI316/304



Part No	Length	Width
9004112	75mm	28mm

ECCENTRIC LATCH-COVERED

Stainless Steel AISI316/304



Part No	Length	Width
9004116	105mm	24mm



FITTINGS

www.chnfuyou.com

TOP SLIDES

Stainless Steel AISI316/304



Part No	Diameter
71175	22mm
71176	25mm

TOP CAP

Stainless Steel AISI316/304



Part No	Diameter
71179	22mm
71180	25mm

EXTERNAL SWIVELING JOINT FOR BIMINI PIPES

Stainless Steel AISI316/304



Part No	Diameter
71181	22mm
71182	25mm

DECK HINGE



Part No	Diameter
71185	8mm

AISI316 STAINLESS STEEL EXTERNAL SWIVELING JOINT



Part No	Diameter
71183	7/8"
71184	1"

DECK HINGE90°

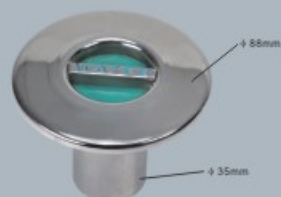
Stainless Steel AISI316/304



Part No	LxW
71189	54x73mm

DECK FILLER

Stainless Steel AISI316/304



Part No	Length	Diameter
76143	68mm	88mm

HEAVY DUTY LIFT HANDLE

Stainless Steel AISI316/304



Part No	Length	Diameter
76144	78-65mm	98mm
76145	110-65mm	98mm

STAINLESS STEEL FUEL VENT



Part No	Length
0252	62x65-16mm

STAINLESS STEEL FUEL VENT



Part No	Size
76146	19x91mm

STAINLESS STEEL FUEL VENT



Part No	Size
76147	19x35x120mm

STAINLESS STEEL FUEL VENT



Part No	Size
76148	28x40x150mm

STAINLESS STEEL FUEL VENT



Part No	Length	Diameter
76166	64mm	16mm

STAINLESS STEEL FUEL VENT



Part No	Length	Diameter
76165	84mm	16mm

BENT TUBE FUEL VENT



Part No	Size
76149	28x100x103mm



FITTINGS

www.chnfuyou.com

WATER PLUG



Part No	Diameter
76151	18mm/23mm

WATER PLUG

Stainless Steel AISI316/304



Part No	Diameter
76150	23--25mm

WATER



Part No	Diameter
S75140	38mm

WATER PLUG

Stainless Steel AISI316/304



Part No	Length
VP1	φ 13x φ 17x25mm
VP2	φ 22x φ 26x25mm
VP3	φ 29x φ 33x25mm
VP6	φ 17.5x φ 22x24mm

BRASS SNAP HANDLE DRAIN PLUG



Part No	Diameter
76164	25mm

BRASS SNAP HANDLE DRAIN PLUG



Part No	Diameter
VP7	23mm

CUP HOLDER



Part No	Depth	Int.Diameter
500804	82mm	82mm

CUP HOLDER



Part No	Depth	Int.Diameter
500805	87mm	89mm

CUP HOLDER



Part No	Depth	Int.Diameter
500800	98mm	90mm

CUP HOLDER



Part No	Depth	Int.Diameter
500798	65mm	92mm

CUP HOLDER



Part No	O.Length	Diameter	Cups
500801	124mm	105.5mm	1
500802	124mm	105.5mm	2
500803	124mm	105.5mm	3

DRINK CUP HOLDER



Part No	Height	Int.Diameter
500799	43mm	70mm

CUP HOLDER



Part No	Height	Int.Diameter
50794	85mm	90mm

CUP HOLDER



Part No	Depth	Int.Diameter
500795	75mm	69mm

CUP HOLDER



Part No	Depth	Int.Diameter
500796	85mm	90mm



FITTINGS

www.chnfuyou.com

SUPPORT LEG OF LADDER
Stainless Steel AISI316/304



Part No	Diameter
76169	25mm

CLAMP OF LADDER
Stainless Steel AISI316/304



Part No	Diameter
99527	22/25mm

CLAMP OF LADDER
Stainless Steel AISI316/304



Part No	Diameter
70646	22/25mm

TEE OPEN 90"
Stainless Steel AISI316/304



Part No	Diameter
S3280	22mm
S3281	25mm

CLAMP FOR LADDER



Part No	Diameter
S08124	22/25mm

CLAMP FOR LADDER



Part No	Diameter
700613	22mm
700614	25mm

CLAMP FOR LADDER



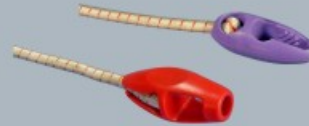
Part No	Length	Diameter
12089	75mm	32mm
12090	83mm	38mm

SAIL LASHES with BALL ENDS



Part No	Length	Diameter
S3038	380mm	4mm

SHOCK CORD



Part No	Diameter
S08153	6mm
S08154	8mm
S08155	10mm

SHOCK CORD



Part No	Diameter
S08129	6mm
S08130	8mm
S08132	10mm

SHOCK CORD HOOK



Part No	Diameter
S08133	8mm

SHOCK CORD



Part No	Diameter
S08131	5mm
S08132	6mm



Part No	Length	Part No	Length	Part No	Length	Part No	Length	Part No	Length	Part No	Length
70628	m5*19	70630	16*11	70629	m10*15	60602	22mm	60603	4mm-26-16	60607	31mm

www.chnfuyou.com

FITTINGS



LIFT RING WITH SPRING
Stainless Steel AISI316/304



Part No	Length	Width
98718	66mm	56mm
98717	48mm	44mm

LIFT RING WITH SPRING
Stainless Steel AISI316/304



Part No	Length	Width
98719	75mm	58mm

FLUSH HATCH HANDLE



Part No	Length	Width
99720	76mm	58mm

S. STEEL ANCHOR CONNECTOR WITH SWWIVEL
Stainless Steel AISI316



Part No	Diameter
71150	8-10mm
71151	10-12mm

S. STEEL ANCHOR CONNECTOR WITH SWWIVEL
Stainless Steel AISI316



Part No	Diameter
71152	8-10mm
71162	10-12mm

RELEASE PIN WITH LANYARD



Part No	Length	Diameter
72343	225mm	1.1mm

HOLLOW SPIKE S. STEEL WITH PLASTIC HANDLE
Stainless Steel AISI316/304



Part No	Length
76132	170mm

HATCH COVER PULL



Part No	Length	Diameter
95891	2" x3/16"	1 1/4" x1/8"

SAFETY CABLE FOR MOTOR BRACKET



Part No	Length	Diameter
01001	715mm	5mm

RAIL FITTING TEE



Part No	Length	D 1	D 2
70303A	42mm	1/2-19mm	9mm
70303B	43mm	1/2-19mm	9mm

RAIL FITTING TEE



Part No	Diameter	Angle
03541	7/8"	90°
03541B	1"	90°

SAFETY LINE LINK
Stainless Steel AISI316/304



Part No	Length	Diameter
S71365	105mm	4mm

SPRING LOADED HINGE



Part No	Length	Width	Thickness
5051/5052	483mm	51mm	1.5mm

BLACK COATED HINGE



Part No	Length	Width	Thickness
845361	343mm	76mm	1mm

FOLDING HINGE



Part No	Length	Width	Thickness
3096	238mm	153mm	1.5mm



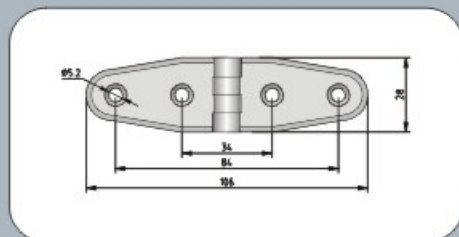
HINGE

www.chnfuyou.com

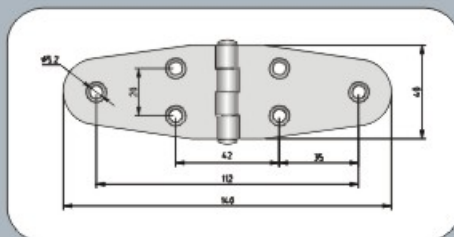
www.chnfuyou.com



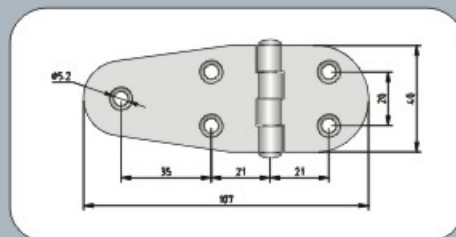
**Specializing in the production of stainless steel yacht
marine accessories Manufacturing plant**



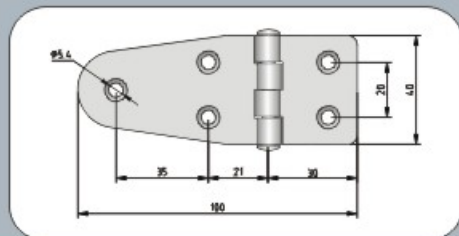
S441134 106x30x2



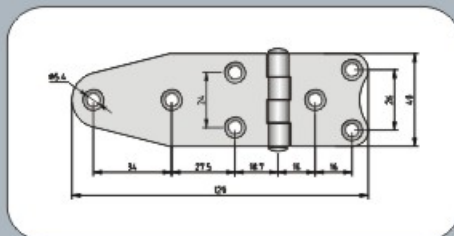
S441720 140x40x2
S441729 140x40x2



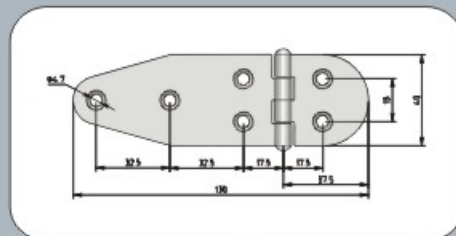
S441710 107x40x2
S441719 107x40x2



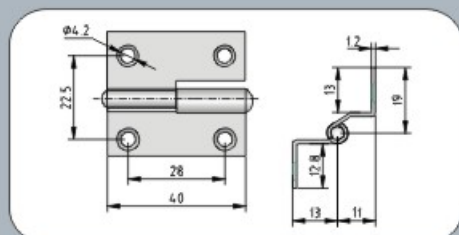
RE441710 100x40x2



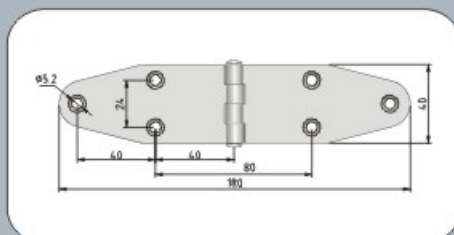
0452519 130x40x2



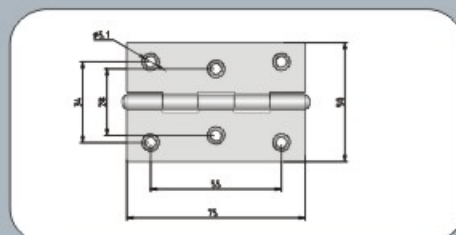
8043 130x40x1.5



S456539 40x35x1.2



S446249 180x40x2
S441624 180x40x2



401370 75x50x1.5

